

PRX II antibody

Cat. No. GTX15572

Host	Rabbit
Clonality	Polyclonal
Isotype	IgG
Applications	WB, ICC/IF, IHC-P
Reactivity	Human

Package

50 µl

Applications

Application Note

*Optimal dilutions/concentrations should be determined by the researcher.

Suggested dilution	Recommended dilution
WB	1:10,000
ICC/IF	1:500
IHC-P	Assay dependent

Not tested in other applications.

Calculated MW 22 kDa. ([Note](#))

Product Note This antibody is specific for Prx 2 and shows no cross-reactivity with other Prx isoforms.

Properties

Form	Liquid
Buffer	Serum
Preservative	0.05% Sodium azide
Storage	Store as concentrated solution. Centrifuge briefly prior to opening vial. For short-term storage (1-2 weeks), store at 4°C. For long-term storage, aliquot and store at -20°C or below. Avoid multiple freeze-thaw cycles.
Immunogen	Synthetic peptide corresponding to residues L(104) L A D V T R R L S E D(115) of human Peroxiredoxin 2.
Purification	Unpurified
Conjugation	Unconjugated

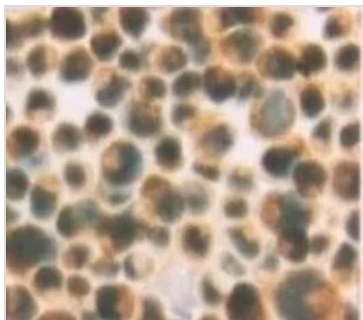
Note

For laboratory research use only. Not for any clinical, therapeutic, or diagnostic use in humans or animals. Not for animal or human consumption.

Purchasers shall not, and agree not to enable third parties to, analyze, copy, reverse engineer or otherwise attempt to determine the structure or sequence of the product.



For full product information, images and publications, please visit our [website](#).

DATA IMAGES

GTX15572 ICC/IF Image

ICC/IF analysis of TSU-Pr1 cells using GTX15572 PRX II antibody.



For full product information, images and publications, please visit our [website](#).