

TCR delta TCS1 antibody [TS-1]

Cat. No. GTX15592

Host	Mouse
Clonality	Monoclonal
Isotype	IgG1
Applications	IHC-Fr, FCM, IP, Activation, IHC, Neutralizing/Inhibition
Reactivity	Human

Package
100 µg

Applications

Application Note

*Optimal dilutions/concentrations should be determined by the researcher.

Suggested dilution	Recommended dilution
IHC-Fr	Assay dependent
FCM	1-2 µg/test
IP	Assay dependent
Activation	Assay dependent
IHC	Assay dependent
Neutralizing/Inhibition	Assay dependent

Not tested in other applications.

Properties

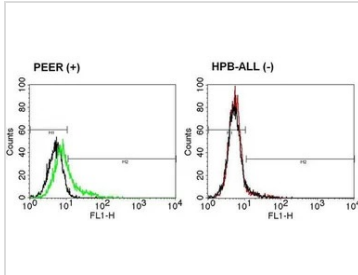
Form	Liquid
Buffer	PBS, 0.5% BSA
Preservative	0.1% Sodium azide
Storage	Store as concentrated solution. Centrifuge briefly prior to opening vial. For short-term storage (1-2 weeks), store at 4°C. For long-term storage, aliquot and store at -20°C or below. Avoid multiple freeze-thaw cycles.
Concentration	0.15 mg/ml (Please refer to the vial label for the specific concentration.)
Immunogen	Human TCR Vdelta1-Jdelta1
Purification	Purified IgG
Conjugation	Unconjugated

For full product information, images and publications, please visit our [website](#).

For laboratory research use only. Not for any clinical, therapeutic, or diagnostic use in humans or animals. Not for animal or human consumption.

Note

Purchasers shall not, and agree not to enable third parties to, analyze, copy, reverse engineer or otherwise attempt to determine the structure or sequence of the product.

DATA IMAGES

GTX15592 FCM Image

FACS analysis of TCR delta positive PEER cells (left panel) or TCR delta negative HPB-ALL cells (right panel) using GTX15592 TCR delta TCS1 antibody [TS-1].

Dilution : 5ul of primary antibody were used per test.



For full product information, images and publications, please visit our [website](https://www.genetex.com).