

TCR delta TCS1 antibody [TS-1] (FITC)

Cat. No. GTX15593

Host	Mouse
Clonality	Monoclonal
Isotype	IgG1
Application	ICC/IF, FACS
Reactivity	Human

Package
100 test

APPLICATION

Application Note

*Optimal dilutions/concentrations should be determined by the researcher.

Suggested dilution	Recommended dilution
ICC/IF	Assay dependent
FACS	1-2 µg/test

Not tested in other applications.

Product Note Washing step with 0.1% Tween is necessary to expose antigen.

PROPERTIES

Form	Liquid
Buffer	PBS, 0.5% BSA, Glycerol
Preservative	0.1% Sodium azide
Storage	Store as concentrated solution. Centrifuge briefly prior to opening vial. Store at 4°C. Protect from light.
Concentration	0.1 mg/ml (Please refer to the vial label for the specific concentration.)
Immunogen	Human TCR Vdelta1-Jdelta2
Purification	Protein A purified
Conjugation	Fluorescein isothiocyanate (FITC)

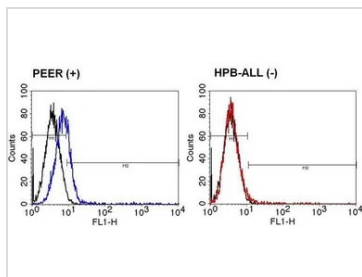
Note

For laboratory research use only. Not for any clinical, therapeutic, or diagnostic use in humans or animals. Not for animal or human consumption.

Purchasers shall not, and agree not to enable third parties to, analyze, copy, reverse engineer or otherwise attempt to determine the structure or sequence of the product.



For full product information, images and publications, please visit our [website](#).

DATA IMAGES

GTX15593 FACS Image

FACS analysis of TCR delta positive PEER cells (left panel) or TCR delta negative HPB-ALL cells (right panel) using GTX15593 TCR delta TCS1 antibody [TS-1] (FITC).

Dilution : 5ul of primary antibody were used per test



For full product information, images and publications, please visit our [website](https://www.genetex.com).

Date 2024 / 05 / 20 Page 2 of 2