

## TCR gamma + delta antibody [5A6.E91] (FITC)

Cat. No. GTX15596

Host	Mouse
Clonality	Monoclonal
Isotype	IgG1
Applications	ICC/IF, FCM, ELISA, IHC, Neutralizing/Inhibition
Reactivity	Human, Primate

**Package**  
100 test

## Applications

## Application Note

\*Optimal dilutions/concentrations should be determined by the researcher.

Suggested dilution	Recommended dilution
ICC/IF	Assay dependent
FCM	1-2 µg/test
ELISA	Assay dependent
IHC	Assay dependent
Neutralizing/Inhibition	Assay dependent

Not tested in other applications.

## Properties

Form	Liquid
Buffer	PBS, 0.5% BSA, Glycerol
Preservative	0.1% Sodium azide
Storage	Store as concentrated solution. Centrifuge briefly prior to opening vial. Store at 4°C. Protect from light.
Concentration	0.1 mg/ml (Please refer to the vial label for the specific concentration.)
Immunogen	Pan TCR gamma delta
Purification	Protein A purified
Conjugation	Fluorescein isothiocyanate (FITC) <a href="#">Wavelength</a>

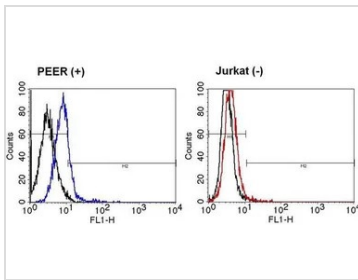
## Note

For laboratory research use only. Not for any clinical, therapeutic, or diagnostic use in humans or animals. Not for animal or human consumption.

Purchasers shall not, and agree not to enable third parties to, analyze, copy, reverse engineer or otherwise attempt to determine the structure or sequence of the product.



For full product information, images and publications, please visit our [website](#).

**DATA IMAGES**

**GTX15596 FCM Image**

FACS analysis of TCR gamma/delta on TCR gamma/delta positive PEER cells(left panel) or TCR gamma/delta negative Jurkat cells(right panel) using GTX15596 TCR gamma + delta antibody [5A6.E91] (FITC).

Dilution : 5ul of primary antibody were used per test



For full product information, images and publications, please visit our [website](https://www.genetex.com).