

# gp210 antibody, N-term

**Cat. No. GTX15600**

<b>Host</b>	Rabbit
<b>Clonality</b>	Polyclonal
<b>Isotype</b>	IgG
<b>Applications</b>	WB
<b>Reactivity</b>	Rat, Xenopus laevis

**Package**

50 µl

## Applications

### Application Note

Optimal dilutions should be determined experimentally by the researcher.

<b>Calculated MW</b>	205 kDa. ( <a href="#">Note</a> )
<b>Product Note</b>	Recognises mammalian, rat & xenopus gp210

## Properties

<b>Form</b>	Liquid
<b>Buffer</b>	Serum
<b>Preservative</b>	0.1% Sodium azide
<b>Storage</b>	Store as concentrated solution. Centrifuge briefly prior to opening vial. For short-term storage (1-2 weeks), store at 4°C. For long-term storage, aliquot and store at -20°C or below. Avoid multiple freeze-thaw cycles.
<b>Immunogen</b>	Purified bacterial N-terminal fusion protein
<b>Purification</b>	Unpurified
<b>Conjugation</b>	Unconjugated

### Note

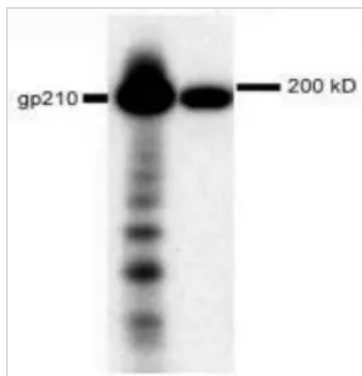
For laboratory research use only. Not for any clinical, therapeutic, or diagnostic use in humans or animals. Not for animal or human consumption.

Purchasers shall not, and agree not to enable third parties to, analyze, copy, reverse engineer or otherwise attempt to determine the structure or sequence of the product.



For full product information, images and publications, please visit our [website](#).

## DATA IMAGES



### GTX15600 WB Image

Western blot analysis of rat liver nuclear envelopes (left hand lane) and Xenopus nuclei (Right hand lane) using GTX15600



For full product information, images and publications, please visit our [website](#).