

gp210 antibody, C-term

Cat. No. GTX15601

Host	Rabbit
Clonality	Polyclonal
Isotype	IgG
Applications	WB, ICC/IF
Reactivity	Human, Mouse, Rat, Monkey

Package

50 µl

Applications

Application Note

Recommended Starting Dilutions:

For WB: Use at 1:1000

For ICC/IF: Use at 1:100

Optimal dilutions should be determined experimentally by the researcher.

Calculated MW	205 kDa. (Note)
Product Note	Rat Gp210 (C-terminal). Cross reacts with mouse, human & monkey

Properties

Form	Liquid
Buffer	Serum
Preservative	0.1% Sodium azide
Storage	Store as concentrated solution. Centrifuge briefly prior to opening vial. For short-term storage (1-2 weeks), store at 4°C. For long-term storage, aliquot and store at -20°C or below. Avoid multiple freeze-thaw cycles.
Concentration	Batch dependent (Please refer to the vial label for the specific concentration.)
Immunogen	Purified bacterial C-terminal fusion protein
Conjugation	Unconjugated

Note

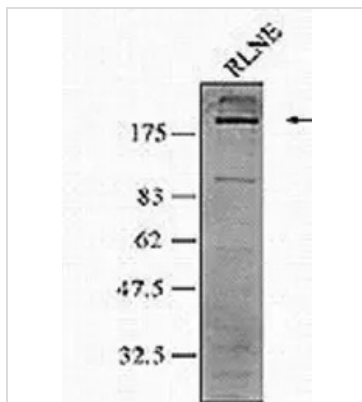
For laboratory research use only. Not for any clinical, therapeutic, or diagnostic use in humans or animals. Not for animal or human consumption.

Purchasers shall not, and agree not to enable third parties to, analyze, copy, reverse engineer or otherwise attempt to determine the structure or sequence of the product.



For full product information, images and publications, please visit our [website](#).

DATA IMAGES



GTX15601 WB Image

GTX15601 used in Western blot at a 1/1000 with rat liver nuclear envelopes.



For full product information, images and publications, please visit our [website](https://www.genetex.com).