

# MRP4 antibody [M4I-10]

**Cat. No. GTX15602**

<b>Host</b>	Rat
<b>Clonality</b>	Monoclonal
<b>Isotype</b>	IgG2a
<b>Applications</b>	WB, ICC/IF, IHC-Fr, FCM
<b>Reactivity</b>	Human, Mouse

**References** ( 7 )

**Package**

500 µl

## Applications

### Application Note

FACS: Use at a dilution of 1/20 - 1/50. ICC: Use at a dilution of 1/20 - 1/50. IHC-Fr (acetone fixed): Use at a dilution of 1/20. WB: Use at an assay dependent dilution. Predicted molecular weight: 159 kDa. Optimal dilutions/concentrations should be determined by the end user.

**Calculated MW** 150 kDa. ( [Note](#) )

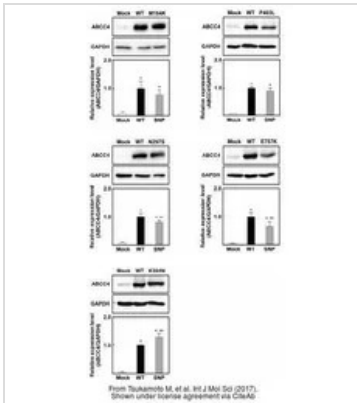
## Properties

<b>Form</b>	Liquid
<b>Buffer</b>	Tissue culture supernatant, 0.7% BSA
<b>Preservative</b>	0.1% Sodium azide
<b>Storage</b>	Store as concentrated solution. Centrifuge briefly prior to opening vial. For short-term storage (1-2 weeks), store at 4°C. For long-term storage, aliquot and store at -20°C or below. Avoid multiple freeze-thaw cycles.
<b>Concentration</b>	0.15 mg/ml (Please refer to the vial label for the specific concentration.)
<b>Immunogen</b>	This antibody was selected after immunization with a fusion protein containing the E. coli maltose binding protein and a fragment of the human MRP4 protein corresponding to amino acids 372-431.
<b>Purification</b>	Tissue culture supernatant
<b>Conjugation</b>	Unconjugated
<b>Note</b>	For laboratory research use only. Not for any clinical, therapeutic, or diagnostic use in humans or animals. Not for animal or human consumption.  Purchasers shall not, and agree not to enable third parties to, analyze, copy, reverse engineer or otherwise attempt to determine the structure or sequence of the product.



For full product information, images and publications, please visit our [website](#).

DATA IMAGES



GTX15602 WB Image

The data was published in the journal Int J Mol Sci in 2017. [PMID: 28677646](https://pubmed.ncbi.nlm.nih.gov/28677646/)



For full product information, images and publications, please visit our [website](https://www.genetex.com).