

# GPR20 antibody

**Cat. No. GTX15609**

<b>Host</b>	Rabbit
<b>Clonality</b>	Polyclonal
<b>Isotype</b>	IgG
<b>Applications</b>	WB, ICC/IF, IHC-P
<b>Reactivity</b>	Mouse

**Package**  
100 µl

## Applications

### Application Note

\*Optimal dilutions/concentrations should be determined by the researcher.

Suggested dilution	Recommended dilution
WB	1:5000
ICC/IF	1:5000
IHC-P	1:2000

Not tested in other applications.

**Calculated MW** 39 kDa. ( [Note](#) )

## Properties

<b>Form</b>	Liquid
<b>Buffer</b>	Serum
<b>Preservative</b>	0.02% Sodium azide
<b>Storage</b>	Store as concentrated solution. Centrifuge briefly prior to opening vial. For short-term storage (1-2 weeks), store at 4°C. For long-term storage, aliquot and store at -20°C or below. Avoid multiple freeze-thaw cycles.
<b>Immunogen</b>	COOH-terminal amino acids of mouse GPR20 (338â358) IHILSIGSHTLTQPLTNGPEP coupled to KLH
<b>Purification</b>	Unpurified
<b>Conjugation</b>	Unconjugated

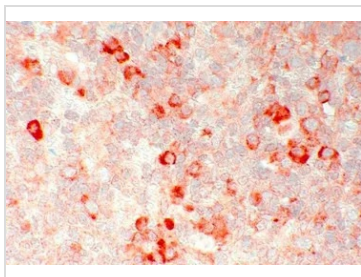
### Note

For laboratory research use only. Not for any clinical, therapeutic, or diagnostic use in humans or animals. Not for animal or human consumption.

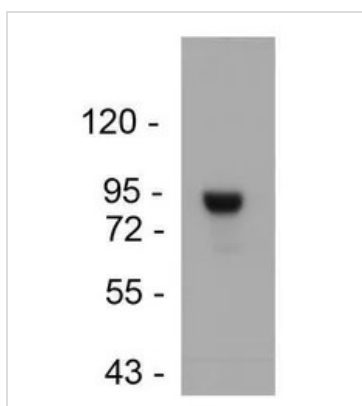
Purchasers shall not, and agree not to enable third parties to, analyze, copy, reverse engineer or otherwise attempt to determine the structure or sequence of the product.



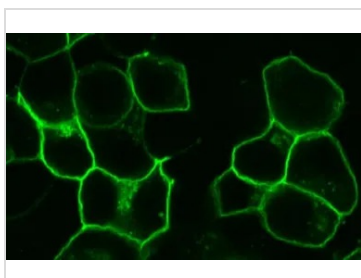
For full product information, images and publications, please visit our [website](#).

**DATA IMAGES**

**GTX15609 IHC-P Image**

IHC-P analysis of mouse spleen tissue using GTX15609 GPR20 antibody.


**GTX15609 WB Image**

WB analysis of mouse spleen tissue lysate using GTX15609 GPR20 antibody.


**GTX15609 ICC/IF Image**

ICC/IF analysis of transfected HEK 293 cells using GTX15609 GPR20 antibody.



For full product information, images and publications, please visit our [website](https://www.genetex.com).