

Integrin alpha 4 antibody [TA-2]

Cat. No. GTX15612

Host	Mouse
Clonality	Monoclonal
Isotype	IgG1
Application	FACS, IP, ELISA, IHC, Neutralizing/Inhibition
Reactivity	Human, Rat

Package
500 µg

APPLICATION

Application Note

*Optimal dilutions/concentrations should be determined by the researcher.

Suggested dilution	Recommended dilution
FACS	Assay dependent
IP	Assay dependent
ELISA	Assay dependent
IHC	Assay dependent
Neutralizing/Inhibition	Assay dependent

Not tested in other applications.

PROPERTIES

Form	Liquid
Buffer	PBS
Preservative	No preservative
Storage	Store as concentrated solution. Centrifuge briefly prior to opening vial. For short-term storage (1-2 weeks), store at 4°C. For long-term storage, aliquot and store at -20°C or below. Avoid multiple freeze-thaw cycles.
Concentration	1 mg/ml (Please refer to the vial label for the specific concentration.)
Immunogen	Rat 150 kD alpha4 chain of VLA-4 (CD49d).
Purification	Purified IgG
Conjugation	Unconjugated

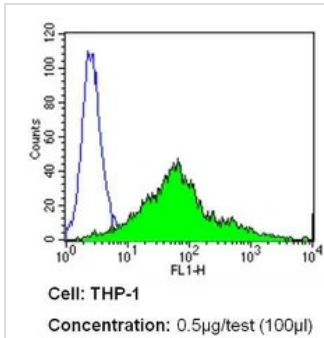
Note

For laboratory research use only. Not for any clinical, therapeutic, or diagnostic use in humans or animals. Not for animal or human consumption.

Purchasers shall not, and agree not to enable third parties to, analyze, copy, reverse engineer or otherwise attempt to determine the structure or sequence of the product.



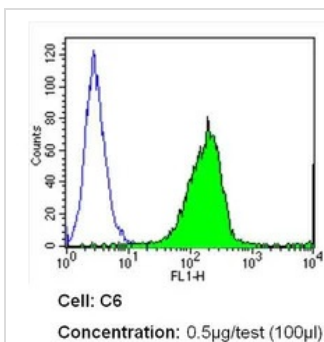
For full product information, images and publications, please visit our [website](#).

DATA IMAGES

GTX15612 FACS Image

FACS analysis of THP-1 cells using GTX15612 Integrin alpha 4 antibody [TA-2] compared to an isotype control (blue).

Dilution : 0.5 ug/test for 60 min at room temperature

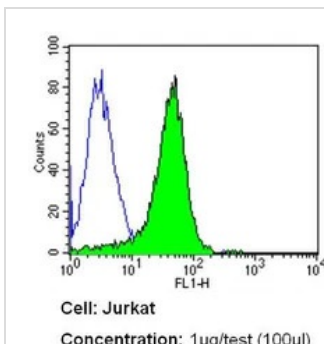
Fixation : 2% paraformaldehyde


GTX15612 FACS Image

FACS analysis of C6 cells using GTX15612 Integrin alpha 4 antibody [TA-2] compared to an isotype control (blue).

Dilution : 0.5 ug/test for 60 min at room temperature

Fixation : 2% paraformaldehyde


GTX15612 FACS Image

FACS analysis of Jurkat cells using GTX15612 Integrin alpha 4 antibody [TA-2] compared to an isotype control (blue).

Dilution : 1 ug/test for 60 min at room temperature

Fixation : 2% paraformaldehyde



For full product information, images and publications, please visit our [website](https://www.genetex.com).