

S-arrestin antibody [PDS1]

Cat. No. GTX15617

Host	Mouse
Clonality	Monoclonal
Isotype	IgG1
Application	WB, IHC-P, ELISA
Reactivity	Human, Rat, Goat, Sheep, Bovine, Pig

Package
100 µl

APPLICATION

Application Note

*Optimal dilutions/concentrations should be determined by the researcher.

Suggested dilution	Recommended dilution
WB	1:1000
IHC-P	1:20
ELISA	Assay dependent

Not tested in other applications.

Calculated MW 45 kDa. ([Note](#))

PROPERTIES

Form	Liquid
Buffer	Ascites
Preservative	0.05% Sodium azide
Storage	Store as concentrated solution. Centrifuge briefly prior to opening vial. For short-term storage (1-2 weeks), store at 4°C. For long-term storage, aliquot and store at -20°C or below. Avoid multiple freeze-thaw cycles.
Immunogen	Visual Arrestin isolated from Porcine Cells.
Purification	Unpurified
Conjugation	Unconjugated

Note

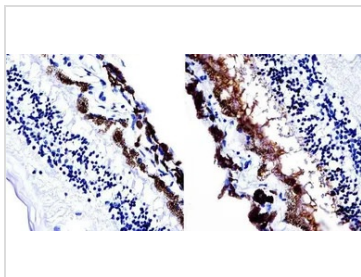
For laboratory research use only. Not for any clinical, therapeutic, or diagnostic use in humans or animals. Not for animal or human consumption.

Purchasers shall not, and agree not to enable third parties to, analyze, copy, reverse engineer or otherwise attempt to determine the structure or sequence of the product.



For full product information, images and publications, please visit our [website](#).

DATA IMAGES



GTX15617 IHC-P Image

IHC-P analysis of human retina tissue using GTX15617 S-arrestin antibody [PDS1].

Antigen retrieval : 10mM sodium citrate followed by microwave treatment for 8-15 minutes.

Dilution : 1:20 overnight in a humidified chamber



For full product information, images and publications, please visit our [website](#).