

## IL10 antibody [9D7]

**Cat. No. GTX15625**

<b>Host</b>	Rat
<b>Clonality</b>	Monoclonal
<b>Isotype</b>	IgG1
<b>Applications</b>	ELISA, Neutralizing /Inhibition, Sandwich ELISA
<b>Reactivity</b>	Human, Mouse, Primate

**Package**  
250 µg

## Applications

**Application Note**

\*Optimal dilutions/concentrations should be determined by the researcher.

Suggested dilution	Recommended dilution
ELISA	Assay dependent
Neutralizing /Inhibition	Assay dependent
Sandwich ELISA	Assay dependent

**Note : Capture : GTX15625, Detection : GTX15764**

Not tested in other applications.

## Properties

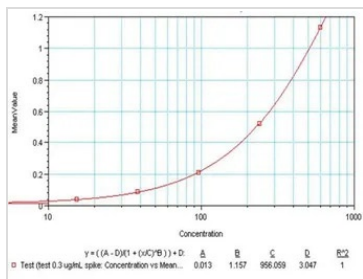
<b>Form</b>	Liquid
<b>Buffer</b>	PBS
<b>Preservative</b>	No preservatives
<b>Storage</b>	Store as concentrated solution. Centrifuge briefly prior to opening vial. For short-term storage (1-2 weeks), store at 4°C. For long-term storage, aliquot and store at -20°C or below. Avoid multiple freeze-thaw cycles.
<b>Concentration</b>	1.02 mg/ml (Please refer to the vial label for the specific concentration.)
<b>Immunogen</b>	Recombinant human IL-10 (COS cell-derived)
<b>Purification</b>	Protein G purified
<b>Conjugation</b>	Unconjugated

**Note** For laboratory research use only. Not for any clinical, therapeutic, or diagnostic use in humans or animals. Not for animal or human consumption.

Purchasers shall not, and agree not to enable third parties to, analyze, copy, reverse engineer or otherwise attempt to determine the structure or sequence of the product.



For full product information, images and publications, please visit our [website](#).

**DATA IMAGES**

**GTX15625 ELISA Image**

Sandwich ELISA analysis of serial diluted human IL-10 recombinant protein (600, 240, 96, 38.4, 15.36, and 0 pg/ml, 50 ul per well) using GTX15625 IL10 antibody [9D7] (coating antibody) at 2 µg/ml and GTX15764 IL10 antibody [12G8] (Biotin) at 0.3 µg/ml



For full product information, images and publications, please visit our [website](#).