

alpha Actinin 4 antibody [7H6]

Cat. No. GTX15648

Host	Mouse
Clonality	Monoclonal
Isotype	IgG
Applications	WB, ICC/IF, IHC-P, FCM, ELISA
Reactivity	Human, Mouse

References (3)

Package

100 µg

Applications

Application Note

*Optimal dilutions/concentrations should be determined by the researcher.

Suggested dilution	Recommended dilution
WB	2 µg/mL
ICC/IF	4 µg/mL
IHC-P	4 µg/ml
FCM	1µg per 10 ⁶ cells
ELISA	Assay dependent

Not tested in other applications.

Calculated MW 105 kDa. ([Note](#))

Properties

Form	Liquid
Buffer	PBS, 0.1% BSA
Preservative	0.05% Sodium azide
Storage	Store as concentrated solution. Centrifuge briefly prior to opening vial. For short-term storage (1-2 weeks), store at 4°C. For long-term storage, aliquot and store at -20°C or below. Avoid multiple freeze-thaw cycles.
Concentration	1 mg/ml (Please refer to the vial label for the specific concentration.)
Immunogen	Synthetic peptide corresponding to residues A(884) P Y Q G P D A V P G A L D(897) of human alpha Actinin 4.
Purification	Protein G purified
Conjugation	Unconjugated

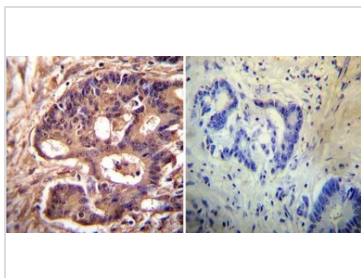


For full product information, images and publications, please visit our [website](#).

For laboratory research use only. Not for any clinical, therapeutic, or diagnostic use in humans or animals. Not for animal or human consumption.

Note

Purchasers shall not, and agree not to enable third parties to, analyze, copy, reverse engineer or otherwise attempt to determine the structure or sequence of the product.

DATA IMAGES

GTX15648 IHC-P Image

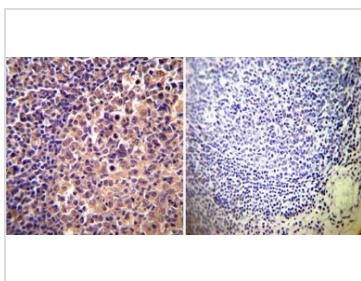
IHC-P analysis of human colon carcinoma tissue using GTX15648 alpha Actinin 4 antibody [7H6].

Left : Primary antibody

Right : Negative control without primary antibody

Antigen retrieval : heat induced antigen retrieval was performed using 10mM sodium citrate (pH6.0) buffer, microwaved for 8-15 minutes

Dilution : 1:200


GTX15648 IHC-P Image

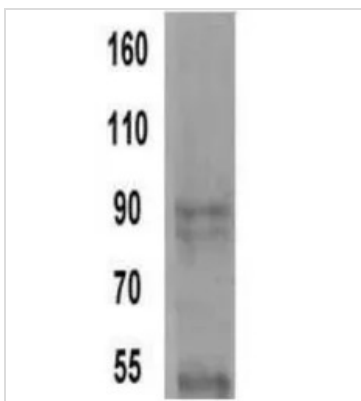
IHC-P analysis of human tonsil tissue using GTX15648 alpha Actinin 4 antibody [7H6].

Left : Primary antibody

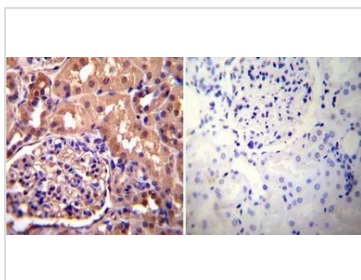
Right : Negative control without primary antibody

Antigen retrieval : heat induced antigen retrieval was performed using 10mM sodium citrate (pH6.0) buffer, microwaved for 8-15 minutes

Dilution : 1:200


GTX15648 WB Image

WB analysis of samples using GTX15648 alpha Actinin 4 antibody [7H6].


GTX15648 IHC-P Image

IHC-P analysis of human kidney tissue using GTX15648 alpha Actinin 4 antibody [7H6].

Left : Primary antibody

Right : Negative control without primary antibody

Antigen retrieval : heat induced antigen retrieval was performed using 10mM sodium citrate (pH6.0) buffer, microwaved for 8-15 minutes

Dilution : 1:200



For full product information, images and publications, please visit our [website](https://www.genetex.com).