

## Alpha fetoprotein / AFP antibody [P5B8]

Cat. No. GTX15650

Host	Mouse
Clonality	Monoclonal
Isotype	IgG1
Applications	WB, ICC/IF, IP, ELISA, RIA
Reactivity	Human

References ( 5 )

Package

100 µg

## Applications

## Application Note

\*Optimal dilutions/concentrations should be determined by the researcher.

Suggested dilution	Recommended dilution
WB	1 µg/ml
ICC/IF	5 µg/ml
IP	Assay dependent
ELISA	Assay dependent
RIA	Assay dependent

Not tested in other applications.

Calculated MW 69 kDa. ( [Note](#) )

## Properties

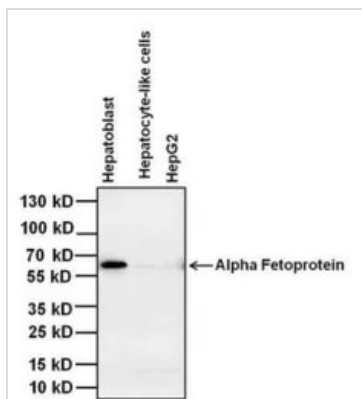
Form	Liquid
Buffer	10mM Potassium Phosphate, 135mM NaCl, 2.5mM KCl, 0.1% BSA
Preservative	0.05% Sodium azide
Storage	Store as concentrated solution. Centrifuge briefly prior to opening vial. For short-term storage (1-2 weeks), store at 4°C. For long-term storage, aliquot and store at -20°C or below. Avoid multiple freeze-thaw cycles.
Concentration	1 mg/ml (Please refer to the vial label for the specific concentration.)
Immunogen	Purified AFP from Cord Blood
Purification	Protein A purified
Conjugation	Unconjugated

For full product information, images and publications, please visit our [website](#).

For laboratory research use only. Not for any clinical, therapeutic, or diagnostic use in humans or animals. Not for animal or human consumption.

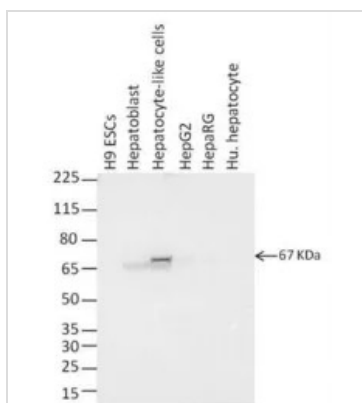
**Note**

Purchasers shall not, and agree not to enable third parties to, analyze, copy, reverse engineer or otherwise attempt to determine the structure or sequence of the product.

**DATA IMAGES**

**GTX15650 WB Image**

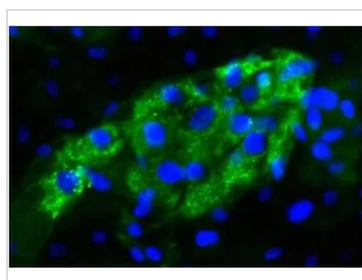
WB analysis of 20 ug of the indicated whole cell lysates using GTX15650 Alpha fetoprotein / AFP antibody [P5B8].

Dilution : 2 µg/ml


**GTX15650 WB Image**

WB analysis of 10 µg of whole cell extract from H9 ESCs, H9 ESC-derived hepatoblasts, ESC-derived hepatocyte-like cells, HepG2 cells, HepaRG cells, and primary human hepatocytes using GTX15650 Alpha fetoprotein / AFP antibody [P5B8].

Dilution : 1 µg/ml


**GTX15650 ICC/IF Image**

ICC/IF analysis of permeabilized endoderm (derived from human ES cells) using GTX15650 Alpha fetoprotein / AFP antibody [P5B8].

Green : Primary antibody

Blue : cell nucleus

Dilution : 5 µg/ml



For full product information, images and publications, please visit our [website](https://www.genetex.com).