

## Apolipoprotein A1 antibody [513]

Cat. No. GTX15658

<b>Host</b>	Mouse
<b>Clonality</b>	Monoclonal
<b>Isotype</b>	IgG1
<b>Applications</b>	WB, IHC-P, IP, ELISA, RIA
<b>Reactivity</b>	Human

Package  
100 µg

## Applications

## Application Note

\*Optimal dilutions/concentrations should be determined by the researcher.

Suggested dilution	Recommended dilution
WB	1:500-1:2000
IHC-P	1:10-1:100
IP	Assay dependent
ELISA	1µg/ml
RIA	Assay dependent

Not tested in other applications.

**Calculated MW** 31 kDa. ([Note](#))

## Properties

<b>Form</b>	Liquid
<b>Buffer</b>	10mM Potassium Phosphate, 135mM NaCl, 2.5mM KCl, 0.1% BSA
<b>Preservative</b>	0.05% Sodium azide
<b>Storage</b>	Store as concentrated solution. Centrifuge briefly prior to opening vial. For short-term storage (1-2 weeks), store at 4°C. For long-term storage, aliquot and store at -20°C or below. Avoid multiple freeze-thaw cycles.
<b>Concentration</b>	1 mg/ml (Please refer to the vial label for the specific concentration.)
<b>Immunogen</b>	Purified human plasma Apo A-1
<b>Purification</b>	Purified by ion exchange chromatography
<b>Conjugation</b>	Unconjugated

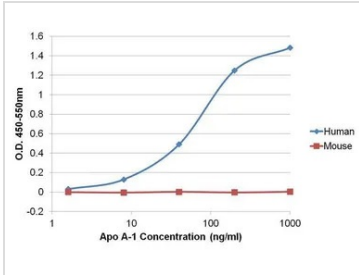


For full product information, images and publications, please visit our [website](#).

For laboratory research use only. Not for any clinical, therapeutic, or diagnostic use in humans or animals. Not for animal or human consumption.

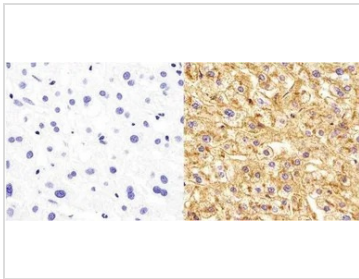
**Note**  
 Purchasers shall not, and agree not to enable third parties to, analyze, copy, reverse engineer or otherwise attempt to determine the structure or sequence of the product.

DATA IMAGES



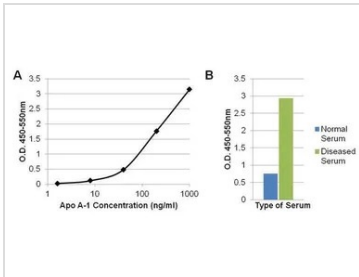
**GTX15658 ELISA Image**

Sandwich ELISA analysis of recombinant human Apo A-1 or recombinant mouse Apo A-1 protein ranging from 1.6-1000ng/ml using GTX15658 Apolipoprotein A1 antibody [513] (detection antibody) and Apo A-1 rabbit monoclonal antibody (capture antibody).



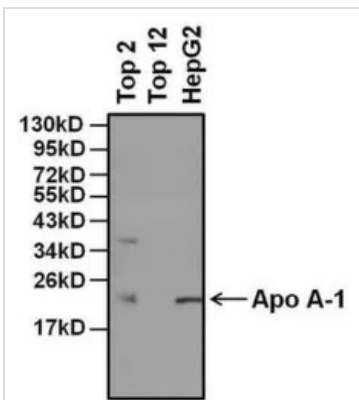
**GTX15658 IHC-P Image**

IHC-P analysis of human liver tissue sections using GTX15658 Apolipoprotein A1 antibody [513].  
 Right : Primary antibody  
 Left : Negative control without primary antibody  
 Antigen retrieval : microwaved for 10 minutes in 10mM sodium citrate, pH 6.0  
 Dilution : 1:50



**GTX15658 ELISA Image**

Sandwich ELISA analysis of recombinant human Apo A-1 standards ranging from 1.6-1000ng/ml (A) or 100ul of diluted normal human serum or diluted serum from a patient with dyslipidemia (B) using GTX15658 Apolipoprotein A1 antibody [513] (detection antibody) and Apo A-1 rabbit monoclonal antibody (capture antibody).



**GTX15658 WB Image**

WB analysis of various samples using GTX15658 Apolipoprotein A1 antibody [513].  
 Left Lane : 10ul of serum depleted of highly abundant proteins using the Top 2 Abundant Protein Depletion Spin Columns, and concentrated using the PES Protein Concentrators, 10K MWCO.  
 Middle Lane : 10ul of serum depleted of highly abundant proteins using the Top 12 Abundant Protein Depletion Spin Columns, and concentrated using the PES Protein Concentrators, 10K MWCO.  
 Right Lane : 50 ug of HepG2 whole cell lysate  
 Dilution : 1:1000



For full product information, images and publications, please visit our [website](#).