

Apolipoprotein A1 antibody [6001]

Cat. No. GTX15660

Host	Mouse
Clonality	Monoclonal
Isotype	IgG2a
Applications	WB, IHC-P, IP, ELISA, RIA
Reactivity	Human

Package
100 µg

Applications

Application Note

*Optimal dilutions/concentrations should be determined by the researcher.

Suggested dilution	Recommended dilution
WB	1:500-1:2000
IHC-P	1:50-1:200
IP	Assay dependent
ELISA	1µg/ml
RIA	Assay dependent

Not tested in other applications.

Calculated MW 31 kDa. ([Note](#))

Product Note MA5-14667 may not be as successful for detecting endogenous Apo A-1 by Western blot.

Properties

Form	Liquid
Buffer	10mM Potassium Phosphate, 135mM NaCl, 2.5mM KCl, 0.1% BSA
Preservative	0.05% Sodium azide
Storage	Store as concentrated solution. Centrifuge briefly prior to opening vial. For short-term storage (1-2 weeks), store at 4°C. For long-term storage, aliquot and store at -20°C or below. Avoid multiple freeze-thaw cycles.
Concentration	1 mg/ml (Please refer to the vial label for the specific concentration.)
Immunogen	Purified human plasma Apo A-1
Purification	Purified by ion exchange chromatography
Conjugation	Unconjugated

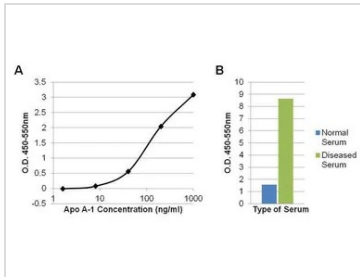


For full product information, images and publications, please visit our [website](#).

For laboratory research use only. Not for any clinical, therapeutic, or diagnostic use in humans or animals. Not for animal or human consumption.

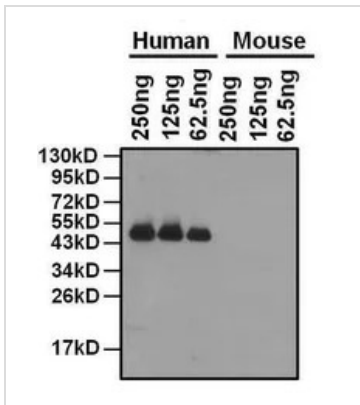
Note
 Purchasers shall not, and agree not to enable third parties to, analyze, copy, reverse engineer or otherwise attempt to determine the structure or sequence of the product.

DATA IMAGES



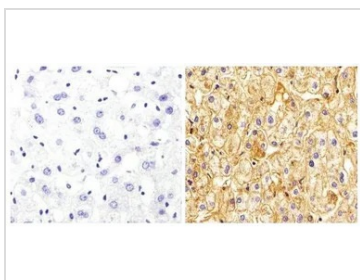
GTX15660 ELISA Image

Sandwich ELISA analysis of recombinant human Apo A-1 standards ranging from 1.6-1000ng/ml (A) or 100ul of diluted normal human serum or diluted serum from a patient with dyslipidemia (B) using GTX15660 Apolipoprotein A1 antibody [6001] (detection antibody) and Apo A-1 rabbit oligoclonal antibody (capture antibody).



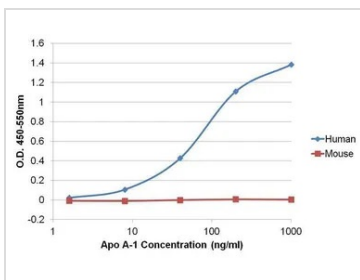
GTX15660 WB Image

WB analysis of the indicated amounts of a recombinant human Apo A-1-hlgG1Fc fusion protein or a recombinant mouse Apo A-1-hlgG1Fc fusion protein using GTX15660 Apolipoprotein A1 antibody [6001].
 Dilution : 1:1000



GTX15660 IHC-P Image

IHC-P analysis of human liver tissue sections using GTX15660 Apolipoprotein A1 antibody [6001].
 Right : Primary antibody
 Left : Negative control without primary antibody
 Antigen retrieval : microwaved for 10 minutes in 10mM sodium citrate, pH 6.0
 Dilution : 1:100



GTX15660 ELISA Image

Sandwich ELISA analysis of recombinant human Apo A-1 or recombinant mouse Apo A-1 protein ranging from 1.6-1000ng/ml using GTX15660 Apolipoprotein A1 antibody [6001] (detection antibody) and Apo A-1 rabbit oligoclonal antibody (capture antibody).



For full product information, images and publications, please visit our [website](#).