

Apolipoprotein B antibody [F2C13]

Cat. No. GTX15663

Host	Mouse
Clonality	Monoclonal
Isotype	IgG1
Applications	ICC/IF, IP, ELISA, RIA
Reactivity	Human

Package
100 µg

Applications

Application Note

*Optimal dilutions/concentrations should be determined by the researcher.

Suggested dilution	Recommended dilution
ICC/IF	Assay dependent
IP	Assay dependent
ELISA	Assay dependent
RIA	Assay dependent

Not tested in other applications.

Properties

Form	Liquid
Buffer	10mM Potassium Phosphate, 2.5mM KCl, 135mM NaCl, 0.1% BSA
Preservative	0.05% Sodium azide
Storage	Store as concentrated solution. Centrifuge briefly prior to opening vial. For short-term storage (1-2 weeks), store at 4°C. For long-term storage, aliquot and store at -20°C or below. Avoid multiple freeze-thaw cycles.
Concentration	1 mg/ml (Please refer to the vial label for the specific concentration.)
Immunogen	Purified human serum LDL
Purification	Purified by ion exchange chromatography
Conjugation	Unconjugated

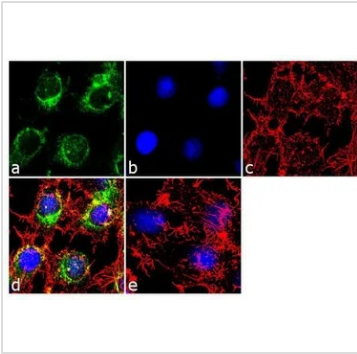
Note For laboratory research use only. Not for any clinical, therapeutic, or diagnostic use in humans or animals. Not for animal or human consumption.

Purchasers shall not, and agree not to enable third parties to, analyze, copy, reverse engineer or otherwise attempt to determine the structure or sequence of the product.



For full product information, images and publications, please visit our [website](#).

DATA IMAGES

**GTX15663 ICC/IF Image**

ICC/IF analysis of HepG2 cells using GTX15663 Apolipoprotein B antibody [F2C13]. Panel e is a no primary antibody control.

Green : Primary antibody

Blue : Nuclei

Red : Actin

Fixation : 4% paraformaldehyde

Permeabilization : 0.1% Trito X-100 for 10 minutes

Dilution : 2 µg/ml in 0.1% BSA and incubated for 3 hours at room temperature



For full product information, images and publications, please visit our [website](#).