

## ATM (phospho Ser1981) antibody [10H11]

Cat. No. GTX15666

Host	Mouse
Clonality	Monoclonal
Isotype	IgG1
Applications	WB, ICC/IF, IP
Reactivity	Human, Mouse

Package  
100 µg

## Applications

## Application Note

\*Optimal dilutions/concentrations should be determined by the researcher.

Suggested dilution	Recommended dilution
WB	1:500 - 1:1000
ICC/IF	1:250
IP	Assay dependent

Not tested in other applications.

Calculated MW 351 kDa. ([Note](#))

## Properties

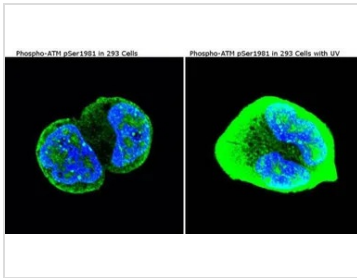
Form	Liquid
Buffer	PBS, 0.1% BSA
Preservative	0.05% Sodium azide
Storage	Store as concentrated solution. Centrifuge briefly prior to opening vial. For short-term storage (1-2 weeks), store at 4°C. For long-term storage, aliquot and store at -20°C or below. Avoid multiple freeze-thaw cycles.
Concentration	Batch dependent (Please refer to the vial label for the specific concentration.)
Immunogen	Synthetic peptide corresponding to residues S(1974) L A F E E S(p) Q S T T I S S(1988) of human ATM Kinase protein.
Purification	Protein G purified
Conjugation	Unconjugated

## Note

For laboratory research use only. Not for any clinical, therapeutic, or diagnostic use in humans or animals. Not for animal or human consumption.

Purchasers shall not, and agree not to enable third parties to, analyze, copy, reverse engineer or otherwise attempt to determine the structure or sequence of the product.

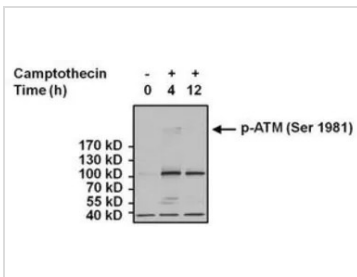
For full product information, images and publications, please visit our [website](#).

**DATA IMAGES**

**GTX15666 ICC/IF Image**

ICC/IF analysis of 293 untreated cells (left panel) or stimulated cells with 100 mJ UV (right panel) using GTX15666 ATM (phospho Ser1981) antibody [10H11].

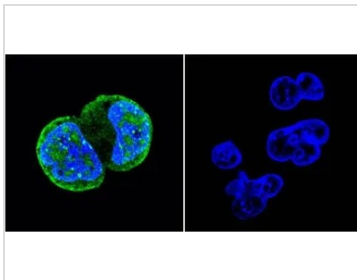
Fixation : Formalin

Permeabilization : 0.1% Triton X-100 in TBS for 5-10 minutes


**GTX15666 WB Image**

WB analysis of 40 ug of lysate from HeLa cells untreated (Lane 1), treated with 10uM Camptothecin for 4h (Lane 2) or 12h (Lane 3) using GTX15666 ATM (phospho Ser1981) antibody [10H11].

Dilution : 1:1000


**GTX15666 ICC/IF Image**

ICC/IF analysis of HT-29 cells using GTX15666 ATM (phospho Ser1981) antibody [10H11].

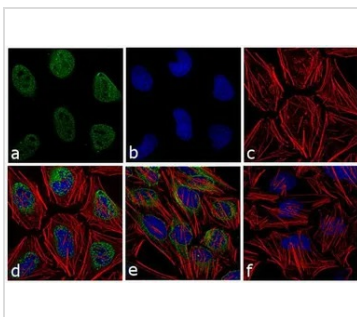
Left : Primary antibody

Right : Negative control without primary antibody

Fixation : Formalin

Permeabilization : 0.1% Triton X-100 in TBS for 5-10 minutes

Dilution : 1:50 and incubated overnight


**GTX15666 ICC/IF Image**

ICC/IF analysis of HeLa cells irradiated with UV for 4 hours using GTX15666 ATM (phospho Ser1981) antibody [10H11]. Panel e is a no primary antibody control.

Green : Primary antibody

Blue : Nuclei

Red : Actin

Fixation : 4% paraformaldehyde

Permeabilization : 0.1% Triton X-100 for 10 minutes



For full product information, images and publications, please visit our [website](https://www.genetex.com).