

Bid antibody [23F7]

Cat. No. GTX15667

Host	Mouse
Clonality	Monoclonal
Isotype	IgG
Applications	WB, ICC/IF
Reactivity	Human, Mouse

Package
100 µl

Applications

Application Note

*Optimal dilutions/concentrations should be determined by the researcher.

Suggested dilution	Recommended dilution
WB	1:1000
ICC/IF	1-2 µg/ml

Not tested in other applications.

Calculated MW 22 kDa. ([Note](#))

Properties

Form	Liquid
Buffer	PBS, 0.1% BSA
Preservative	0.05% Sodium azide
Storage	Store as concentrated solution. Centrifuge briefly prior to opening vial. For short-term storage (1-2 weeks), store at 4°C. For long-term storage, aliquot and store at -20°C or below. Avoid multiple freeze-thaw cycles.
Concentration	1 mg/ml (Please refer to the vial label for the specific concentration.)
Immunogen	Residues 5-195 from human recombinant protein expressed in bacteria
Purification	Protein A purified
Conjugation	Unconjugated

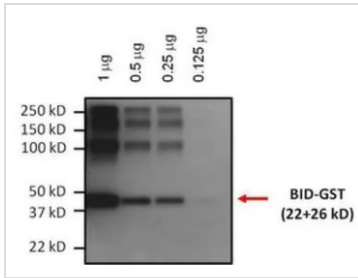
Note

For laboratory research use only. Not for any clinical, therapeutic, or diagnostic use in humans or animals. Not for animal or human consumption.

Purchasers shall not, and agree not to enable third parties to, analyze, copy, reverse engineer or otherwise attempt to determine the structure or sequence of the product.

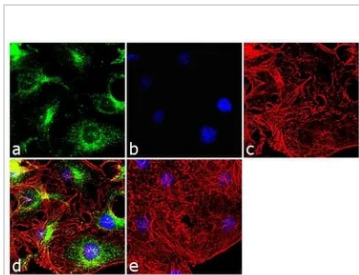


For full product information, images and publications, please visit our [website](#).

DATA IMAGES

GTX15667 WB Image

WB analysis of 0.125-1 µg purified BID-GST fusion protein using GTX15667 Bid antibody [23F7].

Dilution : 1:1000


GTX15667 ICC/IF Image

ICC/IF analysis of HeLa cells using GTX15667 Bid antibody [23F7]. Panel e is a no primary antibody control.

Green : Primary antibody

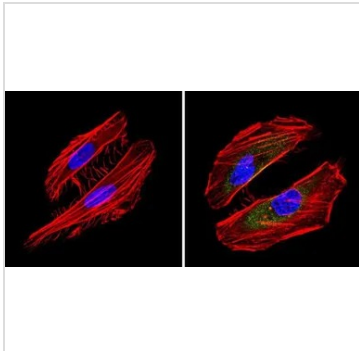
Blue : Nuclei

Red : Actin

Fixation : 4% paraformaldehyde

Permeabilization : 0.1% Triton X-100 for 10 minutes

Dilution : 2 µg/ml in 0.1% BSA and incubated for 3 hours at room temperature


GTX15667 ICC/IF Image

ICC/IF analysis of HeLa cells using GTX15667 Bid antibody [23F7]. Cells were probed without (left) or with(right) an antibody.

Green : Primary antibody

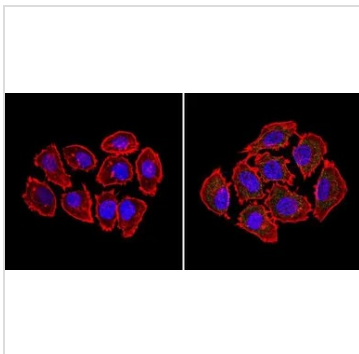
Blue : Nuclei

Red : Actin

Fixation : Formalin

Permeabilization : 0.1% Triton X-100 in TBS for 5-10 minutes

Dilution : 1:20 overnight at 4°C


GTX15667 ICC/IF Image

ICC/IF analysis of A549 cells using GTX15667 Bid antibody [23F7]. Cells were probed without (left) or with(right) an antibody.

Green : Primary antibody

Blue : Nuclei

Red : Actin

Fixation : Formalin

Permeabilization : 0.1% Triton X-100 in TBS for 5-10 minutes

Dilution : 1:20 overnight at 4°C



For full product information, images and publications, please visit our [website](http://www.genetex.com).