

hCG beta antibody [P1G7F12 (BIO-BCG-005)]

Cat. No. GTX15728

Host	Mouse
Clonality	Monoclonal
Isotype	IgG1
Applications	IP, ELISA, RIA
Reactivity	Human

Package
100 µg

Applications

Application Note

*Optimal dilutions/concentrations should be determined by the researcher.

Suggested dilution	Recommended dilution
IP	Assay dependent
ELISA	2-10µg/ml
RIA	Assay dependent

Not tested in other applications.

Properties

Form	Liquid
Buffer	10mM Potassium Phosphate, 135mM NaCl, 2.5mM KCl, 0.1% BSA
Preservative	0.05% Sodium azide
Storage	Store as concentrated solution. Centrifuge briefly prior to opening vial. For short-term storage (1-2 weeks), store at 4°C. For long-term storage, aliquot and store at -20°C or below. Avoid multiple freeze-thaw cycles.
Concentration	1 mg/ml (Please refer to the vial label for the specific concentration.)
Immunogen	Chorionic Gonadotropin, b-Subunit
Purification	Protein A purified
Conjugation	Unconjugated

Note

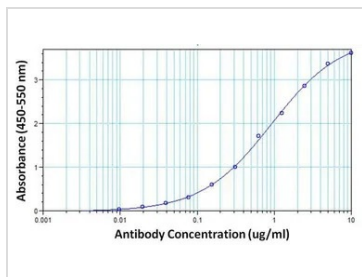
For laboratory research use only. Not for any clinical, therapeutic, or diagnostic use in humans or animals. Not for animal or human consumption.

Purchasers shall not, and agree not to enable third parties to, analyze, copy, reverse engineer or otherwise attempt to determine the structure or sequence of the product.



For full product information, images and publications, please visit our [website](#).

DATA IMAGES



GTx15728 ELISA Image

ELISA analysis of purified hCG protein (10 µg/ml) extracted from human urine using GTx15728 hCG beta antibody [P1G7F12] at 0- 10 µg/mL(serial diluted).



For full product information, images and publications, please visit our [website](#).