

## CREB antibody [LB9]

**Cat. No. GTX15731**

<b>Host</b>	Mouse
<b>Clonality</b>	Monoclonal
<b>Isotype</b>	IgG1
<b>Applications</b>	WB, ICC/IF, IHC-P, IP, ELISA, ChIP assay, IHC
<b>Reactivity</b>	Human, Mouse, Rat, Primate

**Package**  
100 µg

## Applications

**Application Note**

\*Optimal dilutions/concentrations should be determined by the researcher.

Suggested dilution	Recommended dilution
WB	1:500
ICC/IF	5 µg/ml
IHC-P	1:200
IP	2 µg
ELISA	0.1-1 µg/ml
ChIP assay	2.5 µg/10 <sup>6</sup> cells
IHC	Assay dependent

Not tested in other applications.

**Calculated MW** 37 kDa. ( [Note](#) )

## Properties

<b>Form</b>	Liquid
<b>Buffer</b>	PBS, 0.1% BSA
<b>Preservative</b>	0.05% Sodium azide
<b>Storage</b>	Store as concentrated solution. Centrifuge briefly prior to opening vial. For short-term storage (1-2 weeks), store at 4°C. For long-term storage, aliquot and store at -20°C or below. Avoid multiple freeze-thaw cycles.
<b>Concentration</b>	1 mg/ml (Please refer to the vial label for the specific concentration.)
<b>Immunogen</b>	Recombinant human CREB-A protein.
<b>Purification</b>	Protein A purified
<b>Conjugation</b>	Unconjugated



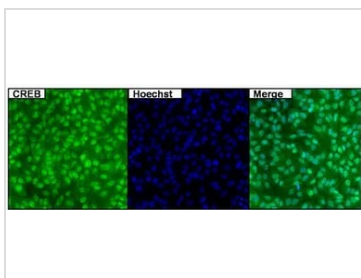
For full product information, images and publications, please visit our [website](#).

For laboratory research use only. Not for any clinical, therapeutic, or diagnostic use in humans or animals. Not for animal or human consumption.

**Note**

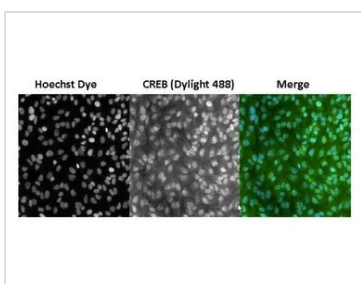
Purchasers shall not, and agree not to enable third parties to, analyze, copy, reverse engineer or otherwise attempt to determine the structure or sequence of the product.

DATA IMAGES



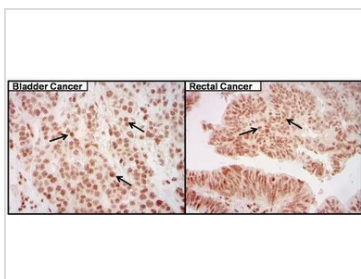
**GTX15731 ICC/IF Image**

ICC/IF analysis of HeLa cells using GTX15731 CREB antibody [LB9].  
 Green : Primary antibody  
 Blue : Nuclei  
 Fixation : Formalin  
 Permeabilization : 0.1% Triton X-100 in TBS for 15 minutes at room temperature  
 Dilution : 1:500 for at least 1 hour at room temperature



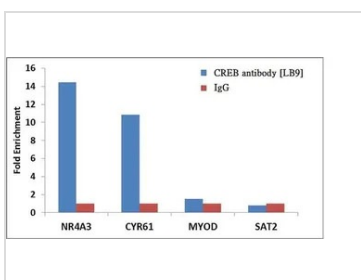
**GTX15731 ICC/IF Image**

ICC/IF analysis of HeLa cells using GTX15731 CREB antibody [LB9].  
 Green : Primary antibody  
 Blue : Nuclei  
 Fixation : Formalin  
 Permeabilization : 0.1% Triton X-100 in TBS for 15 minutes at room temperature  
 Dilution : 1:400 for at least 1 hour at roomtemperature



**GTX15731 IHC-P Image**

IHC-P analysis of human bladder and rectal tissue using GTX15731 CREB antibody [LB9].  
 Antigen retrieval : heat induced antigen retrieval was performed using 10mM sodium citrate (pH6.0) buffer for 20 minutes.  
 Dilution : 1:200



**GTX15731 ChIP assay Image**

ChIP analysis of 2 million HeLa cells using GTX15731 CREB antibody [LB9]. Normal Rabbit IgG was used as a negative IP control. The precipitated DNA was detected by PCR with primer set targeting to promoter of NR4A3, CYR61 gene used as positive control target, and the MYOD, SAT2 used as negative control target.



For full product information, images and publications, please visit our [website](#).