

Ferritin antibody [521]

Cat. No. GTX15742

Host	Mouse
Clonality	Monoclonal
Isotype	IgG1
Applications	ICC/IF, IP, ELISA, RIA
Reactivity	Human

Package
100 µg

Applications

Application Note

*Optimal dilutions/concentrations should be determined by the researcher.

Suggested dilution	Recommended dilution
ICC/IF	1:50-1:200
IP	Assay dependent
ELISA	1 µg/ml
RIA	Assay dependent

Not tested in other applications.

Properties

Form	Liquid
Buffer	10mM Potassium Phosphate, 2.5mM KCl, 135mM NaCl, 0.1% BSA
Preservative	0.05% Sodium azide
Storage	Store as concentrated solution. Centrifuge briefly prior to opening vial. For short-term storage (1-2 weeks), store at 4°C. For long-term storage, aliquot and store at -20°C or below. Avoid multiple freeze-thaw cycles.
Concentration	1 mg/ml (Please refer to the vial label for the specific concentration.)
Immunogen	Human Liver Ferritin
Purification	Protein A purified
Conjugation	Unconjugated

Note

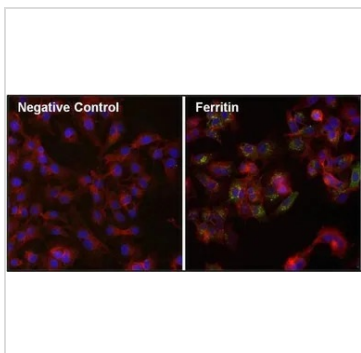
For laboratory research use only. Not for any clinical, therapeutic, or diagnostic use in humans or animals. Not for animal or human consumption.

Purchasers shall not, and agree not to enable third parties to, analyze, copy, reverse engineer or otherwise attempt to determine the structure or sequence of the product.



For full product information, images and publications, please visit our [website](#).

DATA IMAGES



GTX15742 ICC/IF Image

ICC/IF analysis of HepG2 cells using GTX15742 Ferritin antibody [521]. Cells were probed without (left) or with(right) an antibody.

Green : Primary antibody

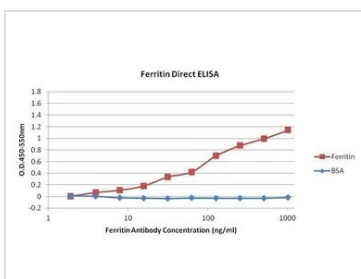
Blue : Nuclei

Red : Actin

Fixation : Formalin

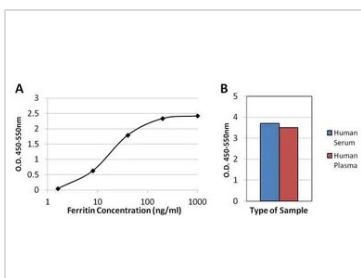
Permeabilization : 0.1% Triton X-100 in TBS for 10 minutes

Dilution : 1:200 for at least 1 hour at room temperature



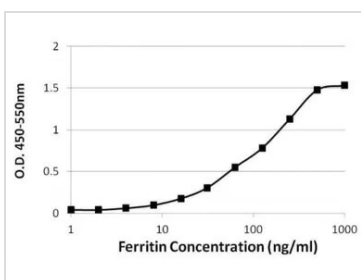
GTX15742 ELISA Image

ELISA analysis of human Ferritin or BSA diluted in carbonate/bicarbonate buffer (1 µg/ml, 100µl/well) using GTX15742 Ferritin antibody [521] at 2 - 1000 µg/mL (serial diluted).



GTX15742 ELISA Image

Sandwich ELISA analysis of recombinant human ferritin light polypeptide (FTL) standards ranging from 1.6-1000ng/ml (A) or 100ul of diluted normal human serum or diluted normal human plasma (B) using GTX15742 Ferritin antibody [521] (capture antibody) at 1 µg/mL and biotin-conjugated ferritin rabbit polyclonal antibody (detection antibody) at 1 µg/mL.



GTX15742 ELISA Image

Sandwich ELISA analysis of recombinant human ferritin light polypeptide (FTL) standards ranging from 1.6-1000ng/ml using GTX15742 Ferritin antibody [521] (detection antibody) at 1 µg/mL and Ferritin duck polyclonal antibody (capture antibody).



For full product information, images and publications, please visit our [website](#).