

Interferon gamma antibody [B133.5]

Cat. No. GTX15750

Host	Mouse
Clonality	Monoclonal
Isotype	IgG1
Applications	WB, IHC-P, FCM, ELISA, IHC, Sandwich ELISA
Reactivity	Human, Mouse

References (5)

Package

250 µg

Applications

Application Note

*Optimal dilutions/concentrations should be determined by the researcher.

Suggested dilution	Recommended dilution
WB	2 µg/ml
IHC-P	Assay dependent
FCM	1:100
ELISA	Assay dependent
IHC	Assay dependent
Sandwich ELISA	Assay dependent

Note : Capture : GTX15624, Detection : GTX15751/GTX15750

Please notice that GTX15750 needs to be conjugated to HRP to function as the detection antibody when paired with GTX15624. Please contact us for custom HRP-conjugated antibody.

Not tested in other applications.

Calculated MW 19 kDa. ([Note](#))

Properties

Form	Liquid
Buffer	PBS
Preservative	No preservatives
Storage	Store as concentrated solution. Centrifuge briefly prior to opening vial. For short-term storage (1-2 weeks), store at 4°C. For long-term storage, aliquot and store at -20°C or below. Avoid multiple freeze-thaw cycles.
Concentration	1 mg/ml (Please refer to the vial label for the specific concentration.)
Immunogen	Recombinant human IFN gamma
Purification	Protein A purified



For full product information, images and publications, please visit our [website](#).

Endotoxin < 10 EU/mg (Determined by LAL assay)

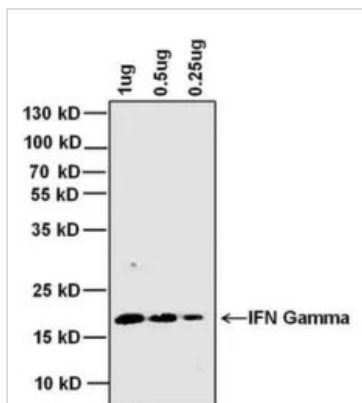
Conjugation Unconjugated

Note

For laboratory research use only. Not for any clinical, therapeutic, or diagnostic use in humans or animals. Not for animal or human consumption.

Purchasers shall not, and agree not to enable third parties to, analyze, copy, reverse engineer or otherwise attempt to determine the structure or sequence of the product.

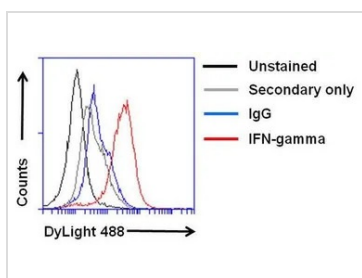
DATA IMAGES



GTx15750 WB Image

WB analysis of indicated amount of human IFN Gamma recombinant protein using GTx15750 Interferon gamma antibody [B133.5].

Dilution : 2 µg/ml



GTx15750 FCM Image

FACS analysis of permeabilized, PHA-M treated Jurkat cells using GTx15750 Interferon gamma antibody [B133.5].

Fixation : 4% formaldehyde

Dilution : 1:100 with IC permeabilization buffer for 30 min on ice



For full product information, images and publications, please visit our [website](https://www.genetex.com).