

## IL4 antibody [E10021]

Cat. No. GTX15758

Host	Mouse
Clonality	Monoclonal
Isotype	IgG1
Applications	WB, ELISA
Reactivity	Human

Package  
250 µg

## Applications

## Application Note

\*Optimal dilutions/concentrations should be determined by the researcher.

Suggested dilution	Recommended dilution
WB	1:1000
ELISA	0.001-20 µg/mL

Not tested in other applications.

Calculated MW 17 kDa. ( [Note](#) )

## Properties

Form	Liquid
Buffer	PBS, 5% Trehalose
Preservative	No preservatives
Storage	Store as concentrated solution. Centrifuge briefly prior to opening vial. Store at 4°C.
Concentration	Batch dependent (Please refer to the vial label for the specific concentration.)
Immunogen	Recombinant human IL-4 purified from Pichia pastoris
Purification	Protein G purified
Conjugation	Unconjugated

## Note

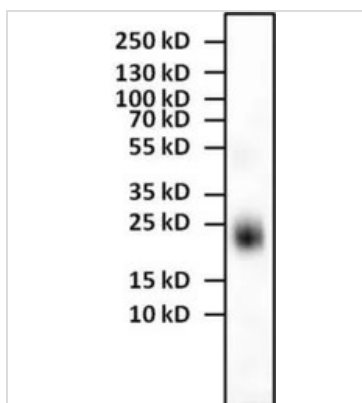
For laboratory research use only. Not for any clinical, therapeutic, or diagnostic use in humans or animals. Not for animal or human consumption.

Purchasers shall not, and agree not to enable third parties to, analyze, copy, reverse engineer or otherwise attempt to determine the structure or sequence of the product.



For full product information, images and publications, please visit our [website](#).

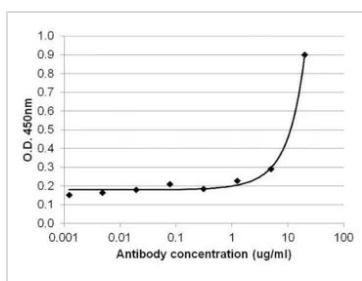
## DATA IMAGES



### GTx15758 WB Image

WB analysis of 1  $\mu$ g of human recombinant IL-4 protein in non-reducing sample buffer using GTx15758 IL4 antibody [E10021].

Dilution : 1:1000



### GTx15758 ELISA Image

ELISA analysis of 1  $\mu$ g/mL human IL-4 recombinant protein diluted in carbonate/bicarbonate buffer) using serial diluted GTx15758 IL4 antibody [E10021].



For full product information, images and publications, please visit our [website](https://www.genetex.com).