

IL4 antibody [25D2] (Biotin)

Cat. No. GTX15759

Host	Rat
Clonality	Monoclonal
Isotype	IgG1
Applications	WB, ICC/IF, FCM, ELISA, IHC, Neutralizing/Inhibition
Reactivity	Human

Package
250 µg

Applications

Application Note

*Optimal dilutions/concentrations should be determined by the researcher.

Suggested dilution	Recommended dilution
WB	1:1000
ICC/IF	Assay dependent
FCM	Assay dependent
ELISA	0.006-25 µg/mL
IHC	Assay dependent
Neutralizing/Inhibition	Assay dependent

Not tested in other applications.

Calculated MW 17 kDa. ([Note](#))

Properties

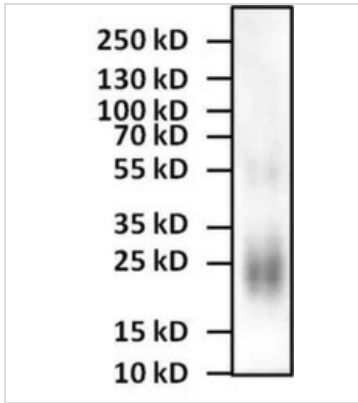
Form	Liquid
Buffer	PBS
Preservative	No preservatives
Storage	Store as concentrated solution. Centrifuge briefly prior to opening vial. For short-term storage (1-2 weeks), store at 4°C. For long-term storage, aliquot and store at -20°C or below. Avoid multiple freeze-thaw cycles.
Concentration	0.96 mg/ml (Please refer to the vial label for the specific concentration.)
Immunogen	Recombinant human IL-4 (CHO cell-derived)
Purification	Protein G purified
Conjugation	Biotin

For full product information, images and publications, please visit our [website](#).

For laboratory research use only. Not for any clinical, therapeutic, or diagnostic use in humans or animals. Not for animal or human consumption.

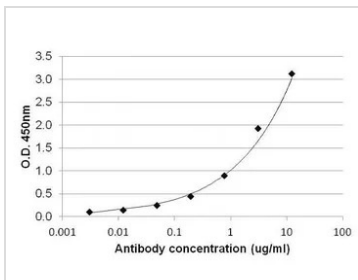
Note

Purchasers shall not, and agree not to enable third parties to, analyze, copy, reverse engineer or otherwise attempt to determine the structure or sequence of the product.

DATA IMAGES

GTX15759 WB Image

WB analysis of 1 μ g of human recombinant IL-4 protein in non-reducing sample buffer using GTX15759 IL4 antibody [25D2].

Dilution : 1:1000


GTX15759 ELISA Image

ELISA analysis of 1 μ g/mL human IL-4 recombinant protein diluted in carbonate/bicarbonate buffer using serial diluted GTX15760 IL4 antibody [25D2].



For full product information, images and publications, please visit our [website](https://www.genetex.com).