

IL6 antibody [7IL6] (Biotin)

Cat. No. GTX15761

Host	Mouse
Clonality	Monoclonal
Isotype	IgG1
Applications	WB, ICC/IF, ELISA, Sandwich ELISA
Reactivity	Human, Mouse, Dog, Pig

Package
250 µg

Applications

Application Note

*Optimal dilutions/concentrations should be determined by the researcher.

Suggested dilution	Recommended dilution
WB	Assay dependent
ICC/IF	Assay dependent
ELISA	Assay dependent
Sandwich ELISA	Assay dependent

Note : Capture : GTX15762, Detection : GTX15761

Not tested in other applications.

Calculated MW 24 kDa. ([Note](#))

Properties

Form	Liquid
Buffer	PBS, 4% BSA
Preservative	Proprietary preservative
Storage	Store as concentrated solution. Centrifuge briefly prior to opening vial. For short-term storage (1-2 weeks), store at 4°C. For long-term storage, aliquot and store at -20°C or below. Avoid multiple freeze-thaw cycles.
Concentration	0.5 mg/ml (Please refer to the vial label for the specific concentration.)
Immunogen	Recombinant human IL-6.
Purification	Protein G purified
Conjugation	Biotin



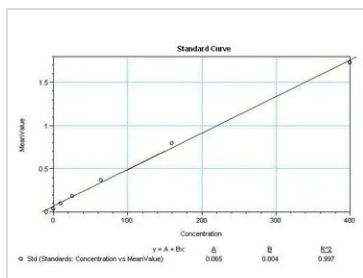
For full product information, images and publications, please visit our [website](#).

For laboratory research use only. Not for any clinical, therapeutic, or diagnostic use in humans or animals. Not for animal or human consumption.

Note

Purchasers shall not, and agree not to enable third parties to, analyze, copy, reverse engineer or otherwise attempt to determine the structure or sequence of the product.

DATA IMAGES



GTX15761 ELISA Image

Sandwich ELISA analysis of serial diluted human IL-6 recombinant protein(50ul per well) using IL6 antibody

Coating : GTX15762 IL6 antibody [5IL6] (4 µg/mL)

Detection : GTX15761 IL6 antibody [7IL6] (Biotin) (0.035 µg/mL)



For full product information, images and publications, please visit our [website](#).