

## IL6 antibody [5IL6]

## Cat. No. GTX15762

<b>Host</b>	Mouse
<b>Clonality</b>	Monoclonal
<b>Isotype</b>	IgG1
<b>Applications</b>	WB, ICC/IF, IHC-P, FCM, ELISA, Sandwich ELISA
<b>Reactivity</b>	Human, Mouse, Pig

Package  
250 µg

## Applications

## Application Note

\*Optimal dilutions/concentrations should be determined by the researcher.

Suggested dilution	Recommended dilution
WB	Assay dependent
ICC/IF	Assay dependent
IHC-P	Assay dependent
FCM	1:100
ELISA	Assay dependent
Sandwich ELISA	Assay dependent

**Note : Permeabilization : saponin for 30 min on ice**  
**Capture : GTX15762, Detection : GTX15761**

Not tested in other applications.

**Calculated MW** 24 kDa. ( [Note](#) )

## Properties

<b>Form</b>	Liquid
<b>Buffer</b>	PBS
<b>Preservative</b>	No preservatives
<b>Storage</b>	Store as concentrated solution. Centrifuge briefly prior to opening vial. For short-term storage (1-2 weeks), store at 4°C. For long-term storage, aliquot and store at -20°C or below. Avoid multiple freeze-thaw cycles.
<b>Concentration</b>	1.01 mg/ml (Please refer to the vial label for the specific concentration.)
<b>Immunogen</b>	Recombinant human IL-6.
<b>Purification</b>	Protein A purified
<b>Conjugation</b>	Unconjugated

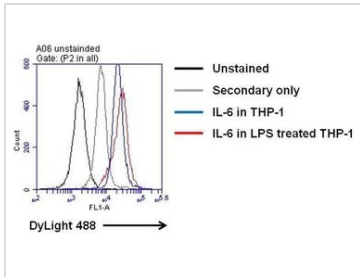


For full product information, images and publications, please visit our [website](#).

For laboratory research use only. Not for any clinical, therapeutic, or diagnostic use in humans or animals. Not for animal or human consumption.

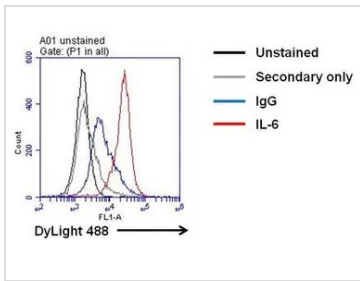
**Note**  
 Purchasers shall not, and agree not to enable third parties to, analyze, copy, reverse engineer or otherwise attempt to determine the structure or sequence of the product.

DATA IMAGES



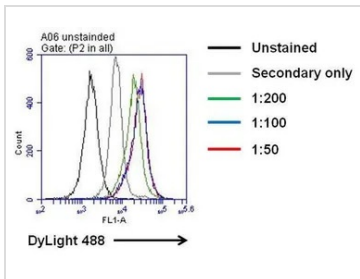
**GTX15762 FCM Image**

FACS analysis of permeabilized, PHA-M stimulated THP-1 cells using GTX15762 IL6 antibody [5IL6].  
 Fixation : 4% formaldehyde  
 Dilution : 1:100 dilution with IC permeabilization buffer for 30 min on ice



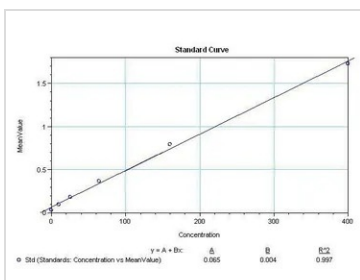
**GTX15762 FCM Image**

FACS analysis of permeabilized, LPS treated THP-1 cells using GTX15762 IL6 antibody [5IL6].  
 Fixation : 4% formaldehyde  
 Dilution : 1:100 with IC permeabilization buffer for 30 min on ice



**GTX15762 FCM Image**

FACS analysis of permeabilized, LPS treated THP-1 cells using GTX15762 IL6 antibody [5IL6].  
 Fixation : 4% formaldehyde  
 Dilution : 1:100 with IC permeabilization buffer for 30 min on ice



**GTX15762 ELISA Image**

Sandwich ELISA analysis of serial diluted human IL-6 recombinant protein(50ul per well) using IL6 antibody  
 Coating : GTX15762 IL6 antibody [5IL6] (4 µg/mL)  
 Detection : GTX15761 IL6 antibody [7IL6] (Biotin) (0.035 µg/mL)



For full product information, images and publications, please visit our [website](#).