

# CXCL8 / IL8 antibody [3IL8-H10]

**Cat. No. GTX15763**

<b>Host</b>	Mouse
<b>Clonality</b>	Monoclonal
<b>Isotype</b>	IgG
<b>Applications</b>	WB, ICC/IF, ELISA, IHC
<b>Reactivity</b>	Human

**Package**  
250 µg

## Applications

### Application Note

\*Optimal dilutions/concentrations should be determined by the researcher.

Suggested dilution	Recommended dilution
WB	Assay dependent
ICC/IF	2 µg/ml
ELISA	Assay dependent
IHC	Assay dependent

Not tested in other applications.

**Calculated MW** 11 kDa. ( [Note](#) )

## Properties

<b>Form</b>	Liquid
<b>Buffer</b>	PBS
<b>Preservative</b>	No preservatives
<b>Storage</b>	Store as concentrated solution. Centrifuge briefly prior to opening vial. For short-term storage (1-2 weeks), store at 4°C. For long-term storage, aliquot and store at -20°C or below. Avoid multiple freeze-thaw cycles.
<b>Concentration</b>	1.08 mg/ml (Please refer to the vial label for the specific concentration.)
<b>Immunogen</b>	Recombinant human IL-8
<b>Purification</b>	Protein A purified
<b>Conjugation</b>	Unconjugated

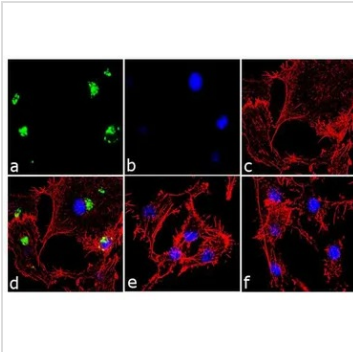
### Note

For laboratory research use only. Not for any clinical, therapeutic, or diagnostic use in humans or animals. Not for animal or human consumption.

Purchasers shall not, and agree not to enable third parties to, analyze, copy, reverse engineer or otherwise attempt to determine the structure or sequence of the product.



For full product information, images and publications, please visit our [website](#).

**DATA IMAGES**

**GTX15763 ICC/IF Image**

ICC/IF analysis of U-87 MG cells treated 1  $\mu$ M thapsigargin for 24 hours using GTX15763 CXCL8 / IL8 antibody [3IL8-H10]. Panel e is untreated cell with no signal. Panel f represents control cells with no primary antibody to assess background.

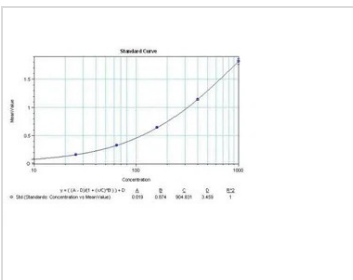
Green : Primary antibody

Blue : Nuclei

Red : Actin

Fixation : 4% paraformaldehyde

Permeabilization : 0.1% Triton X-100 for 10 minute


**GTX15763 ELISA Image**

Sandwich ELISA analysis of serial diluted human IL-8 recombinant protein(50ul per well) using GTX15763 CXCL8 / IL8 antibody [3IL8-H10] (capture antibody) at 3  $\mu$ g/mL and biotinylated mouse anti-human IL-8 monoclonal antibody (detection antibody) at 0.25  $\mu$ g/mL.



For full product information, images and publications, please visit our [website](https://www.genetex.com).