

IL10 antibody [12G8] (Biotin)

Cat. No. GTX15764

Host	Rat
Clonality	Monoclonal
Isotype	IgG2a
Application	WB, FACS, ELISA, Sandwich ELISA
Reactivity	Human, Mouse

Package
250 µg

APPLICATION

Application Note

*Optimal dilutions/concentrations should be determined by the researcher.

Suggested dilution	Recommended dilution
WB	Assay dependent
FACS	Assay dependent
ELISA	Assay dependent
Sandwich ELISA	Assay dependent

Note : Capture : GTX15625, Detection : GTX15764

Not tested in other applications.

Calculated MW 21 kDa. ([Note](#))

PROPERTIES

Form	Liquid
Buffer	PBS, 4% BSA
Preservative	No preservative
Storage	Store as concentrated solution. Centrifuge briefly prior to opening vial. For short-term storage (1-2 weeks), store at 4°C. For long-term storage, aliquot and store at -20°C or below. Avoid multiple freeze-thaw cycles.
Concentration	0.95 mg/ml (Please refer to the vial label for the specific concentration.)
Immunogen	Recombinant human IL-10 (COS cell-derived)
Purification	Protein G purified
Conjugation	Biotin

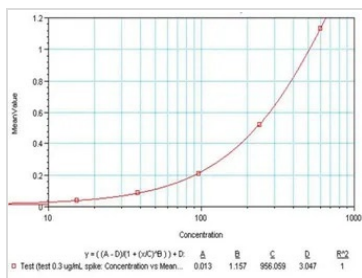


For full product information, images and publications, please visit our [website](#).

For laboratory research use only. Not for any clinical, therapeutic, or diagnostic use in humans or animals. Not for animal or human consumption.

Note

Purchasers shall not, and agree not to enable third parties to, analyze, copy, reverse engineer or otherwise attempt to determine the structure or sequence of the product.

DATA IMAGES

GTX15764 ELISA Image

Sandwich ELISA analysis of serial diluted human IL-10 recombinant protein(50ul per well) using IL10 antibody

Coating : GTX15625 IL10 antibody [9D7] (2 µg/mL)

Detection : GTX15764 IL10 antibody [12G8] (Biotin) (0.3 µg/mL)



For full product information, images and publications, please visit our [website](#).