

Integrin beta 1 / CD29 antibody [TS2/16]

Cat. No. GTX15769

Host	Mouse
Clonality	Monoclonal
Isotype	IgG1
Applications	FCM, IP, ELISA, IHC, Neutralizing/Inhibition
Reactivity	Human, Mouse

Package
100 µg

Applications

Application Note

*Optimal dilutions/concentrations should be determined by the researcher.

Suggested dilution	Recommended dilution
FCM	0.5 µg/test
IP	Assay dependent
ELISA	Assay dependent
IHC	Assay dependent
Neutralizing/Inhibition	Assay dependent

Not tested in other applications.

Properties

Form	Liquid
Buffer	PBS
Preservative	No preservatives
Storage	Store as concentrated solution. Centrifuge briefly prior to opening vial. For short-term storage (1-2 weeks), store at 4°C. For long-term storage, aliquot and store at -20°C or below. Avoid multiple freeze-thaw cycles.
Concentration	Batch dependent (Please refer to the vial label for the specific concentration.)
Immunogen	Human Beta1 Integrin, the Beta1 chain of the Beta1 integrin heterodimer (CD29)
Purification	Protein G purified
Conjugation	Unconjugated

Note

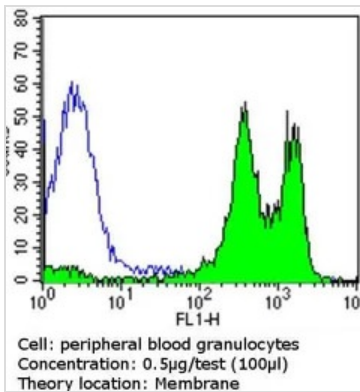
For laboratory research use only. Not for any clinical, therapeutic, or diagnostic use in humans or animals. Not for animal or human consumption.

Purchasers shall not, and agree not to enable third parties to, analyze, copy, reverse engineer or otherwise attempt to determine the structure or sequence of the product.



For full product information, images and publications, please visit our [website](#).

DATA IMAGES



GTX15769 FCM Image

FACS analysis of peripheral blood granulocytes using GTX15769 Integrin beta 1 / CD29 antibody [TS2/16] compared to an isotype control (blue).

Dilution : 0.5 ug/test incubated for 30 min at 4°C



For full product information, images and publications, please visit our [website](https://www.genetex.com).