

MMP2 antibody [F14 P4 D3]

Cat. No. GTX15772

Host	Mouse
Clonality	Monoclonal
Isotype	IgG1
Applications	WB, ELISA
Reactivity	Human, Rat, Bovine

Package
100 µg

Applications

Application Note

*Optimal dilutions/concentrations should be determined by the researcher.

Suggested dilution	Recommended dilution
WB	1:200-1:500
ELISA	1-2 µg

Not tested in other applications.

Calculated MW 74 kDa. ([Note](#))

Properties

Form	Liquid
Buffer	PBS, 0.1% BSA
Preservative	0.05% Sodium azide
Storage	Store as concentrated solution. Centrifuge briefly prior to opening vial. For short-term storage (1-2 weeks), store at 4°C. For long-term storage, aliquot and store at -20°C or below. Avoid multiple freeze-thaw cycles.
Concentration	1 mg/ml (Please refer to the vial label for the specific concentration.)
Immunogen	Synthetic peptide corresponding to residues T(557) S L G L P P D V Q R V D(569) of human MMP-2.
Purification	Protein A purified
Conjugation	Unconjugated

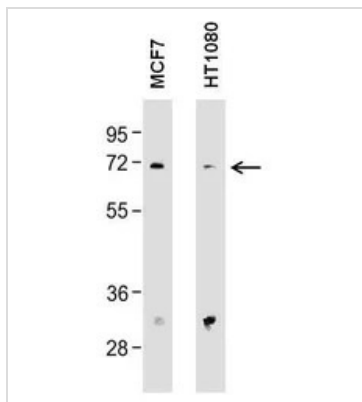
Note

For laboratory research use only. Not for any clinical, therapeutic, or diagnostic use in humans or animals. Not for animal or human consumption.

Purchasers shall not, and agree not to enable third parties to, analyze, copy, reverse engineer or otherwise attempt to determine the structure or sequence of the product.

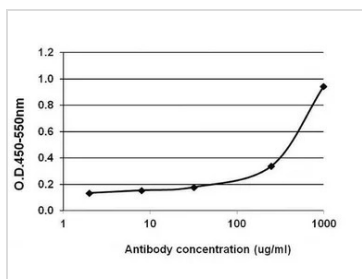


For full product information, images and publications, please visit our [website](#).

DATA IMAGES

GTx15772 WB Image

WB analysis of 25 μ g of the indicated whole cell lysates using GTx15772 MMP2 antibody [F14 P4 D3].

Dilution : 5 μ g/ml


GTx15772 ELISA Image

ELISA analysis of 1 μ g/mL recombinant MMP2 protein diluted in carbonate/bicarbonate buffer using serial diluted GTx15772 MMP2 antibody [F14 P4 D3].



For full product information, images and publications, please visit our [website](https://www.genetex.com).