

Neurofibromin antibody [McNFn27b]

Cat. No. GTX15776

Host	Mouse
Clonality	Monoclonal
Isotype	IgG1
Application	WB, ICC/IF, IHC-P, IHC
Reactivity	Human, Mouse, Rat

Reference (1)

Package

100 µg

APPLICATION

Application Note

*Optimal dilutions/concentrations should be determined by the researcher.

Suggested dilution	Recommended dilution
WB	1-3 µg/ml
ICC/IF	1-2 µg/ml
IHC-P	5-10 µg/mL
IHC	Assay dependent

Not tested in other applications.

Calculated MW 319 kDa. ([Note](#))

PROPERTIES

Form	Liquid
Buffer	PBS, 1mg/ml BSA, 0.05% sodium azide
Storage	Store as concentrated solution. Centrifuge briefly prior to opening vial. For short-term storage (1-2 weeks), store at 4°C. For long-term storage, aliquot and store at -20°C or below. Avoid multiple freeze-thaw cycles.
Concentration	1 mg/ml (Please refer to the vial label for the specific concentration.)
Immunogen	Synthetic peptide corresponding to the N-terminal residues 27-41 of human neurofibromin.
Purification	Protein G purified
Conjugation	Unconjugated

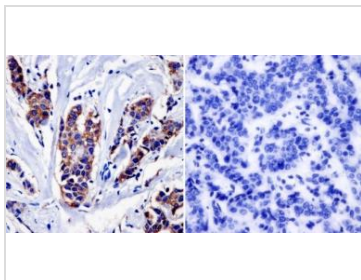
Note

For laboratory research use only. Not for any clinical, therapeutic, or diagnostic use in humans or animals. Not for animal or human consumption.

Purchasers shall not, and agree not to enable third parties to, analyze, copy, reverse engineer or otherwise attempt to determine the structure or sequence of the product.



For full product information, images and publications, please visit our [website](#).

DATA IMAGES

GTx15776 IHC-P Image

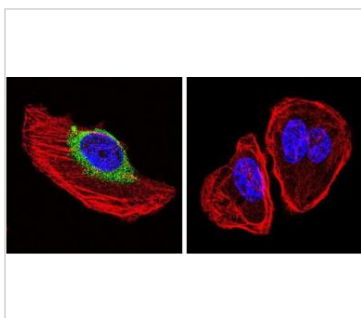
IHC-P analysis of human breast carcinoma tissue using GTx15776 Neurofibromin antibody [McNFn27b].

Left : Primary antibody

Right : Negative control without primary antibody

Antigen retrieval : heat induced antigen retrieval was performed using 10mM sodium citrate (pH6.0) buffer, microwaved for 8-15 minutes

Dilution : 1:20


GTx15776 ICC/IF Image

ICC/IF analysis of U251 cells using GTx15776 Neurofibromin antibody [McNFn27b]. Cells were probed without (right) or with(left) an antibody.

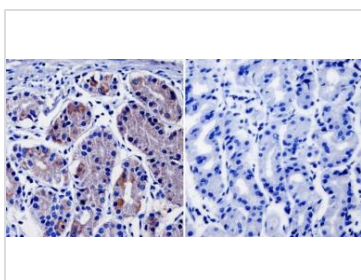
Green : Primary antibody

Blue : Nuclei

Red : Actin

Fixation : formaldehyde

Dilution : 1:20 overnight at 4°C


GTx15776 IHC-P Image

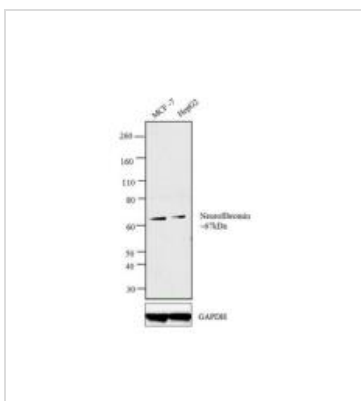
IHC-P analysis of human stomach tissue using GTx15776 Neurofibromin antibody [McNFn27b].

Left : Primary antibody

Right : Negative control without primary antibody

Antigen retrieval : heat induced antigen retrieval was performed using 10mM sodium citrate (pH6.0) buffer, microwaved for 8-15 minutes

Dilution : 1:20


GTx15776 WB Image

WB analysis of whole cell extracts (30 µg lysate) of MCF-7 (Lane 1) and HepG2 (Lane 2) using GTx15776 Neurofibromin antibody [McNFn27b].

Dilution : 1-3 µg/ml



For full product information, images and publications, please visit our [website](https://www.genetex.com).