

alpha 1 Antitrypsin antibody [TMF1#4B5]

Cat. No. GTX15777

Host	Mouse
Clonality	Monoclonal
Isotype	IgG2a
Applications	WB, FCM, IP, ELISA, RIA
Reactivity	Human, Mouse

Package
100 µg

Applications

Application Note

*Optimal dilutions/concentrations should be determined by the researcher.

Suggested dilution	Recommended dilution
WB	1-3 µg/ml
FCM	3-5 µg/10 ⁶ cells
IP	Assay dependent
ELISA	Assay dependent
RIA	Assay dependent

Not tested in other applications.

Calculated MW 47 kDa. ([Note](#))

Properties

Form	Liquid
Buffer	10mM Potassium Phosphate, 2.5mM KCl, 135mM NaCl, 0.1% BSA
Preservative	0.05% Sodium azide
Storage	Store as concentrated solution. Centrifuge briefly prior to opening vial. For short-term storage (1-2 weeks), store at 4°C. For long-term storage, aliquot and store at -20°C or below. Avoid multiple freeze-thaw cycles.
Concentration	1 mg/ml (Please refer to the vial label for the specific concentration.)
Immunogen	Purified human α1-Antitrypsin
Purification	Protein A purified
Conjugation	Unconjugated

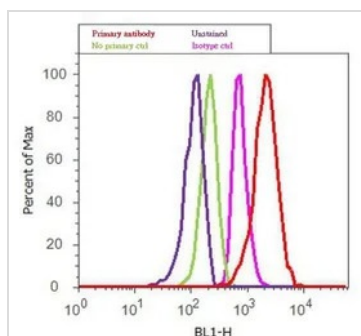


For full product information, images and publications, please visit our [website](#).

For laboratory research use only. Not for any clinical, therapeutic, or diagnostic use in humans or animals. Not for animal or human consumption.

Note

Purchasers shall not, and agree not to enable third parties to, analyze, copy, reverse engineer or otherwise attempt to determine the structure or sequence of the product.

DATA IMAGES

GTX15777 FCM Image

FACS analysis of 70% ethanol fixed HepG2 cells using GTX15777 alpha 1 Antitrypsin antibody [TMF1#4B5].

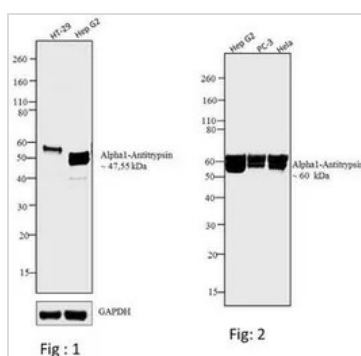
Red histogram : Primary antibody

Pink histogram : mouse isotype control

Fixation : 70% ethanol for 10 minutes

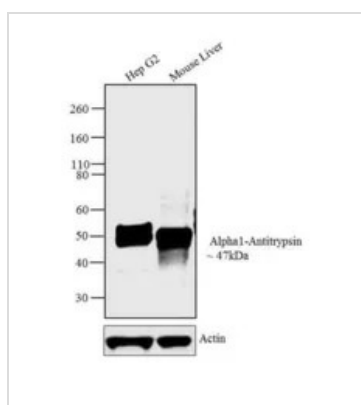
Permeabilization : 0.25% Triton X-100 for 20 minutes

Dilution : 3-5 µg/million cells in 2.5% BSA for 30 minutes at room temperature


GTX15777 WB Image

WB analysis of membrane enriched extracts (30 µg) of HT-29 (Lane 1) and Hep G2 (Lane 2) in figure 1, and condition media of Hep G2 (Lane 1), PC3 (Lane 2), HeLa (Lane 3) in figure 2 using GTX15777 alpha 1 Antitrypsin antibody [TMF1#4B5].

Dilution : 2 µg/ml


GTX15777 WB Image

WB analysis of membrane enriched extracts (30 µg lysate) of Hep G2 (Lane 1) and tissue extract of Mouse Liver (Lane 2) using GTX15777 alpha 1 Antitrypsin antibody [TMF1#4B5].

Dilution : 2 µg/ml



For full product information, images and publications, please visit our [website](https://www.genetex.com).