

PLK1 antibody [13E8]

Cat. No. GTX15779

Host	Mouse
Clonality	Monoclonal
Isotype	IgG2b
Applications	WB, ICC/IF, IHC-P, IP, ELISA, IHC
Reactivity	Human, Mouse, Rat

References (1)

Package

100 µg

Applications

Application Note

*Optimal dilutions/concentrations should be determined by the researcher.

Suggested dilution	Recommended dilution
WB	1:1,000
ICC/IF	3 µg/ml
IHC-P	1:20
IP	Assay dependent
ELISA	Assay dependent
IHC	Assay dependent

Not tested in other applications.

Calculated MW 68 kDa. ([Note](#))

Properties

Form	Liquid
Buffer	PBS, 0.1% BSA
Preservative	0.05% Sodium azide
Storage	Store as concentrated solution. Centrifuge briefly prior to opening vial. For short-term storage (1-2 weeks), store at 4°C. For long-term storage, aliquot and store at -20°C or below. Avoid multiple freeze-thaw cycles.
Concentration	1 mg/ml (Please refer to the vial label for the specific concentration.)
Immunogen	Recombinant protein containing residues 300-400 of human PLK1.
Purification	Protein G purified
Conjugation	Unconjugated



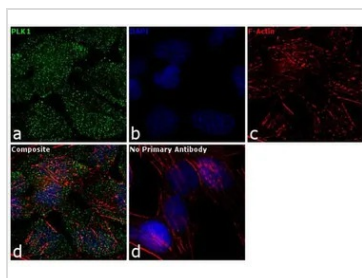
For full product information, images and publications, please visit our [website](#).

For laboratory research use only. Not for any clinical, therapeutic, or diagnostic use in humans or animals. Not for animal or human consumption.

Note

Purchasers shall not, and agree not to enable third parties to, analyze, copy, reverse engineer or otherwise attempt to determine the structure or sequence of the product.

DATA IMAGES



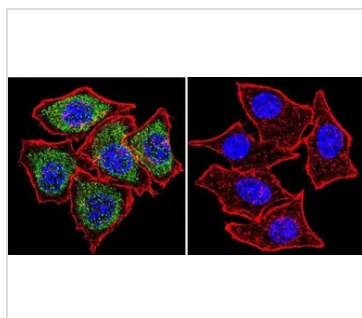
GTX15779 ICC/IF Image

ICC/IF analysis of HeLa cells using GTX15779 PLK1 antibody [13E8].

Fixation : 4% paraformaldehyde

Permeabilization : 0.1% Triton X-100 for 10 minute

Dilution : 3 µg/ml in 0.1% BSA and incubated for overnight at 4°C



GTX15779 ICC/IF Image

ICC/IF analysis of HeLa cells using GTX15779 PLK1 antibody [13E8]. Cells were probed without (right) or with(left) an antibody.

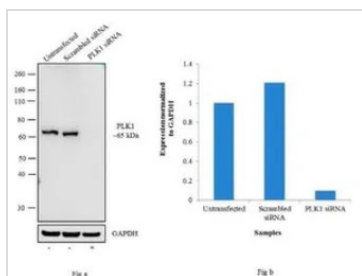
Green : Primary antibody

Blue : Nuclei

Red : Actin

Fixation : formaldehyde

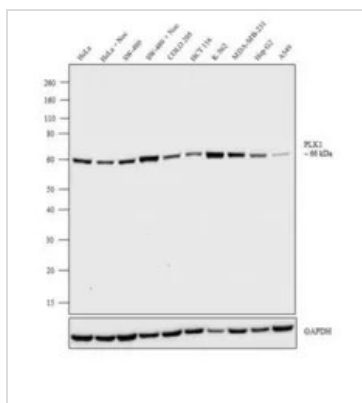
Dilution : 1:20 overnight at 4°C



GTX15779 WB Image

WB analysis of PLK1 knockdown HeLa cells (lane 3), scrambled siRNA transfected cells (lane 2) and untransfected cells (lane 1) using GTX15779 PLK1 antibody [13E8].

Dilution : 1 µg/ml



GTX15779 WB Image

WB analysis of whole cell extracts (30µg) of HeLa (Lane 1), treated with Nocodazole (500nM for 18 hrs) (Lane2), SW-480 (Lane 3), treated with Nocodazole (500nM for 18 hrs) (Lane 4), COLO 205 (Lane 5), HCT 116 (Lane 6), K-562 (Lane 7), MDA-MB-231 (Lane 8), HepG2 (Lane 9), A549 (Lane 10) using GTX15779 PLK1 antibody [13E8].

Dilution : 1:1000



For full product information, images and publications, please visit our [website](http://www.genetex.com).