

MCP1 / CCL2 antibody [E10051]

Cat. No. GTX15784

Host	Mouse
Clonality	Monoclonal
Isotype	IgG1
Applications	WB, ICC/IF, ELISA
Reactivity	Human, Mouse

Package
250 µg

Applications

Application Note

*Optimal dilutions/concentrations should be determined by the researcher.

Suggested dilution	Recommended dilution
WB	1-2 µg/mL
ICC/IF	2 µg/ml
ELISA	Assay dependent

Not tested in other applications.

Calculated MW 11 kDa. ([Note](#))

Properties

Form	Liquid
Buffer	PBS
Preservative	No preservatives
Storage	Store as concentrated solution. Centrifuge briefly prior to opening vial. For short-term storage (1-2 weeks), store at 4°C. For long-term storage, aliquot and store at -20°C or below. Avoid multiple freeze-thaw cycles.
Concentration	1.05 mg/ml (Please refer to the vial label for the specific concentration.)
Immunogen	Recombinant human MCP-1
Purification	Protein G purified
Conjugation	Unconjugated

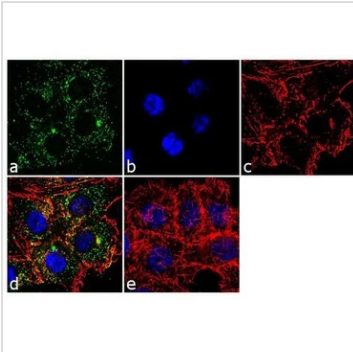
Note

For laboratory research use only. Not for any clinical, therapeutic, or diagnostic use in humans or animals. Not for animal or human consumption.

Purchasers shall not, and agree not to enable third parties to, analyze, copy, reverse engineer or otherwise attempt to determine the structure or sequence of the product.



For full product information, images and publications, please visit our [website](#).

DATA IMAGES

GTX15784 ICC/IF Image

ICC/IF analysis of HCT116 cells using GTX15784 MCP1 / CCL2 antibody [E10051]. Panel e is a no primary antibody control.

Green : Primary antibody

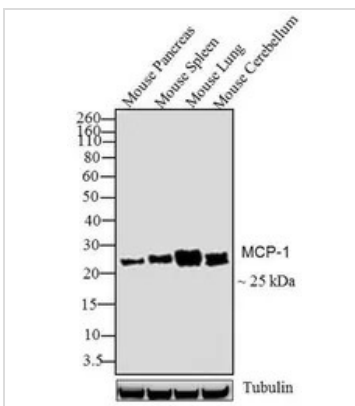
Blue : Nuclei

Red : Actin

Fixation : 4% paraformaldehyde

Permeabilization : 0.1% Triton X-100 for 10 minute

Dilution : 2 µg/ml in 0.1% BSA and incubated for 3 hours at room temperature


GTX15784 WB Image

WB analysis of tissue extracts (30 µg lysate) of Mouse Pancreas (Lane 1), Spleen (Lane 2), Lung (Lane 3) and Cerebellum (Lane 4) using GTX15784 MCP1 / CCL2 antibody [E10051].

Dilution : 1-2 µg/ml



For full product information, images and publications, please visit our [website](https://www.genetex.com).