

# CX3CL1 antibody [4C5]

**Cat. No. GTX15786**

<b>Host</b>	Mouse
<b>Clonality</b>	Monoclonal
<b>Isotype</b>	IgG
<b>Applications</b>	WB, ELISA
<b>Reactivity</b>	Human

**Package**  
100 µg

## Applications

### Application Note

\*Optimal dilutions/concentrations should be determined by the researcher.

Suggested dilution	Recommended dilution
WB	1:1000
ELISA	Assay dependent

Not tested in other applications.

**Calculated MW** 42 kDa. ( [Note](#) )

## Properties

<b>Form</b>	Liquid
<b>Buffer</b>	PBS, 0.1% BSA, 50% Glycerol
<b>Preservative</b>	0.05% Sodium azide
<b>Storage</b>	Store as concentrated solution. Centrifuge briefly prior to opening vial. For short-term storage (1-2 weeks), store at 4°C. For long-term storage, aliquot and store at -20°C or below. Avoid multiple freeze-thaw cycles.
<b>Concentration</b>	1 mg/ml (Please refer to the vial label for the specific concentration.)
<b>Immunogen</b>	Non-glycosylated, polypeptide chain containing 76 amino acids of chemokine domain expressed in E. coli.
<b>Purification</b>	Protein G purified
<b>Conjugation</b>	Unconjugated

### Note

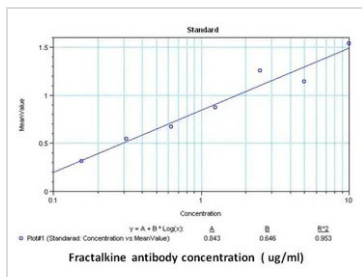
For laboratory research use only. Not for any clinical, therapeutic, or diagnostic use in humans or animals. Not for animal or human consumption.

Purchasers shall not, and agree not to enable third parties to, analyze, copy, reverse engineer or otherwise attempt to determine the structure or sequence of the product.



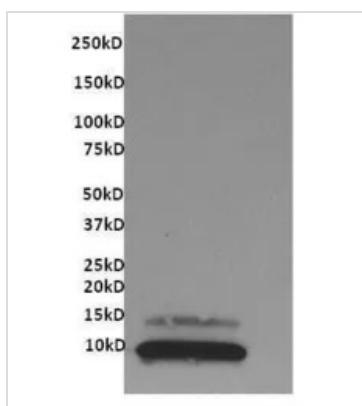
For full product information, images and publications, please visit our [website](#).

## DATA IMAGES



### GTX15786 ELISA Image

ELISA analysis of 1 µg/ml recombinant human Fractalkine (CX3CL1)protein buffer using serial diluted GTX15786 CX3CL1 antibody [4C5].



### GTX15786 WB Image

WB analysis of 0.25µg of recombinant human Fractalkine using GTX15786 CX3CL1 antibody [4C5].  
Dilution : 1:1000



For full product information, images and publications, please visit our [website](https://www.genetex.com).