

STAT3 antibody [9D8]

Cat. No. GTX15789

| | |
|---------------------|-----------------------------------|
| Host | Mouse |
| Clonality | Monoclonal |
| Isotype | IgG |
| Applications | WB, ICC/IF, IHC-P, IP, ChIP assay |
| Reactivity | Human, Mouse, Rat, Primate |

References (2)

Package

100 µl

Applications

Application Note

*Optimal dilutions/concentrations should be determined by the researcher.

| Suggested dilution | Recommended dilution |
|--------------------|----------------------|
| WB | 1:5000 |
| ICC/IF | 1:100 |
| IHC-P | 1:1600 |
| IP | 2 µg |
| ChIP assay | 1-3 µl |

Not tested in other applications.

Calculated MW 88 kDa. ([Note](#))

Properties

| | |
|----------------------|--|
| Form | Liquid |
| Buffer | PBS, 0.1% BSA |
| Preservative | 0.05% Sodium azide |
| Storage | Store as concentrated solution. Centrifuge briefly prior to opening vial. For short-term storage (1-2 weeks), store at 4°C. For long-term storage, aliquot and store at -20°C or below. Avoid multiple freeze-thaw cycles. |
| Concentration | 1 mg/ml (Please refer to the vial label for the specific concentration.) |
| Immunogen | Residues 655-770 from human recombinant protein expressed in bacteria |
| Purification | Protein A purified |
| Conjugation | Unconjugated |



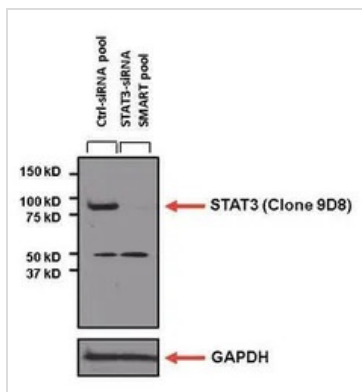
For full product information, images and publications, please visit our [website](#).

For laboratory research use only. Not for any clinical, therapeutic, or diagnostic use in humans or animals. Not for animal or human consumption.

Note

Purchasers shall not, and agree not to enable third parties to, analyze, copy, reverse engineer or otherwise attempt to determine the structure or sequence of the product.

DATA IMAGES

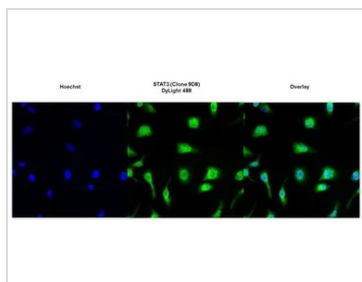


GTX15789 WB Image

WB analysis of STAT3 siRNA transfected or non-targeting control transfected U2OS cell lysate using GTX15789 STAT3 antibody [9D8].

Dilution : 1:1000

Loading : 25 µg



GTX15789 ICC/IF Image

ICC/IF analysis of HeLa cells using GTX15789 STAT3 antibody [9D8].

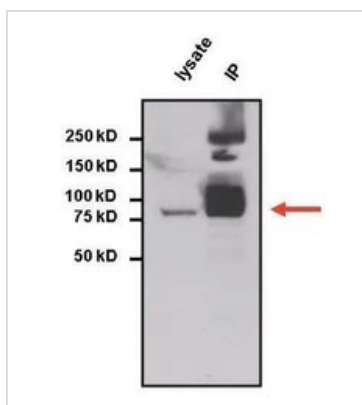
Green : Primary antibody

Blue : Nuclei

Fixation : Formalin

Permeabilization : 0.1% Triton X-100 in TBS for 10 minutes

Dilution : 1:100 for at least 1 hour at room temperature



GTX15789 IP Image

IP analysis of HepG2 cell lysates using GTX15789 STAT3 antibody [9D8].

IP reaction : 2µg antibody / 750µg lysate

Dilution : 1:5000



For full product information, images and publications, please visit our [website](https://www.genetex.com).