

## gamma Tubulin antibody [4D11]

Cat. No. GTX15794

Host	Mouse
Clonality	Monoclonal
Isotype	IgG2b
Applications	WB, ICC/IF, IHC-P, IP, IHC
Reactivity	Human, Mouse, Rat, Primate

Package  
100 µg

## Applications

## Application Note

\*Optimal dilutions/concentrations should be determined by the researcher.

Suggested dilution	Recommended dilution
WB	1:1000
ICC/IF	1:50
IHC-P	1:200
IP	Assay dependent
IHC	Assay dependent

Not tested in other applications.

Calculated MW 51 kDa. ( [Note](#) )

## Properties

Form	Liquid
Buffer	PBS, 0.1% BSA
Preservative	0.05% Sodium azide
Storage	Store as concentrated solution. Centrifuge briefly prior to opening vial. For short-term storage (1-2 weeks), store at 4°C. For long-term storage, aliquot and store at -20°C or below. Avoid multiple freeze-thaw cycles.
Concentration	1 mg/ml (Please refer to the vial label for the specific concentration.)
Immunogen	Recombinant protein containing residues A A T R P D Y I S W G T Q E Q of human gamma Tubulin.
Purification	Protein G purified
Conjugation	Unconjugated

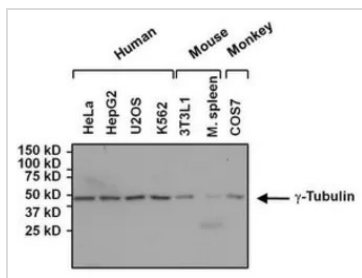
For full product information, images and publications, please visit our [website](#).

For laboratory research use only. Not for any clinical, therapeutic, or diagnostic use in humans or animals. Not for animal or human consumption.

#### Note

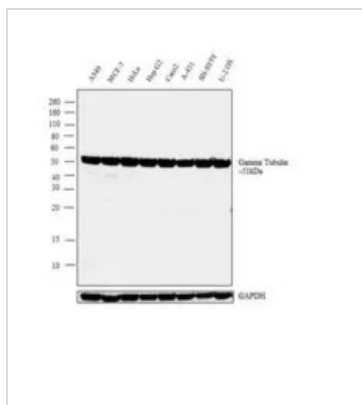
Purchasers shall not, and agree not to enable third parties to, analyze, copy, reverse engineer or otherwise attempt to determine the structure or sequence of the product.

#### DATA IMAGES



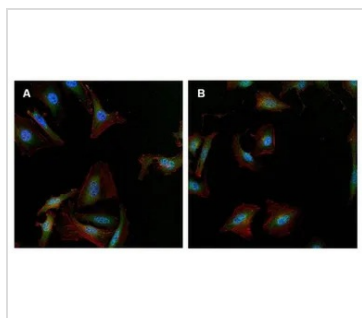
#### GTX15794 WB Image

WB analysis of 50 ug of various whole cell lysates using GTX15794 gamma Tubulin antibody [4D11].  
Dilution : 1:1000



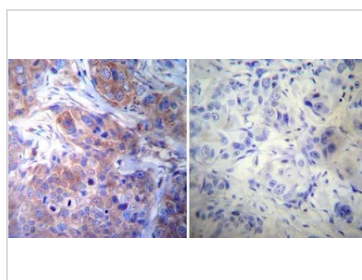
#### GTX15794 WB Image

WB analysis of membrane enriched extracts (30 ug lysate) of A-549 (Lane 1), MCF-7 (Lane 2), HeLa (Lane 3), HepG2 (Lane 4), Caco2 (Lane 5), A-431 (Lane 6), SH-SY5Y (Lane 7) and U-2 OS (Lane 8) using GTX15794 gamma Tubulin antibody [4D11].  
Dilution : 1 µg/ml



#### GTX15794 ICC/IF Image

ICC/IF analysis of HeLa (A) and U2-OS cells (B) using GTX15794 gamma Tubulin antibody [4D11].  
Green : Primary antibody  
Blue : Nuclei  
Red : Actin  
Fixation : Formalin  
Permeabilization : 0.1% Triton X-100 in TBS for 10 minutes  
Dilution : 1:50 for at least 1 hour at room temperature



#### GTX15794 IHC-P Image

IHC-P analysis of human breast carcinoma tissue using GTX15794 gamma Tubulin antibody [4D11].  
Left : Primary antibody  
Right : Negative control without primary antibody  
Antigen retrieval : heat induced antigen retrieval was performed using 10mM sodium citrate (pH6.0) buffer, microwaved for 8-15 minutes  
Dilution : 1:20



For full product information, images and publications, please visit our [website](https://www.genetex.com).