

SRC1 antibody [1135/H4]

Cat. No. GTX15795

Host	Mouse
Clonality	Monoclonal
Isotype	IgG1
Applications	WB, IHC-P, FCM, IP, ChIP assay, IHC
Reactivity	Human, Mouse, Rat, Primate

Package
100 µl

Applications

Application Note

*Optimal dilutions/concentrations should be determined by the researcher.

Suggested dilution	Recommended dilution
WB	1:500-1:5000
IHC-P	1:200
FCM	1µg per 10 ⁶ cells
IP	Assay dependent
ChIP assay	5µl/10 ⁶ cells
IHC	Assay dependent

Not tested in other applications.

Calculated MW 157 kDa. ([Note](#))

Product Note The epitope for GTX15795 has been mapped to the extreme C-terminal end of this fragment.

Properties

Form	Liquid
Buffer	PBS, 0.1% BSA
Preservative	0.05% Sodium azide
Storage	Store as concentrated solution. Centrifuge briefly prior to opening vial. For short-term storage (1-2 weeks), store at 4°C. For long-term storage, aliquot and store at -20°C or below. Avoid multiple freeze-thaw cycles.
Concentration	1 mg/ml (Please refer to the vial label for the specific concentration.)
Immunogen	Synthetic peptide corresponding to residues 477-947 of human SRC-1.
Purification	Purified IgG
Conjugation	Unconjugated

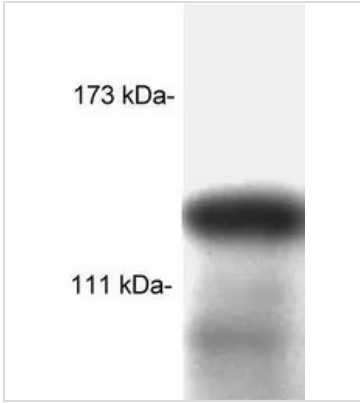


For full product information, images and publications, please visit our [website](#).

For laboratory research use only. Not for any clinical, therapeutic, or diagnostic use in humans or animals. Not for animal or human consumption.

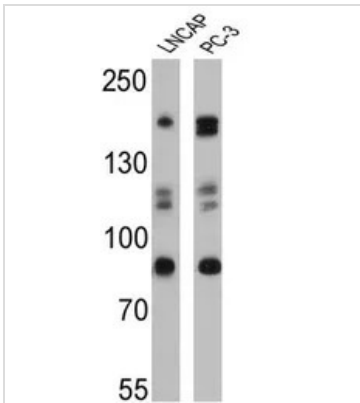
Note
 Purchasers shall not, and agree not to enable third parties to, analyze, copy, reverse engineer or otherwise attempt to determine the structure or sequence of the product.

DATA IMAGES



GTX15795 WB Image

WB analysis of COS cells using GTX15795 SRC1 antibody [1135/H4].



GTX15795 WB Image

WB analysis of 25 ug of LNCaP (lane 1) and PC-3 (lane 2) using GTX15795 SRC1 antibody [1135/H4].
 Dilution : 1:2000



For full product information, images and publications, please visit our [website](#).