

PRC1 antibody [16F2]

Cat. No. GTX15796

Host	Mouse
Clonality	Monoclonal
Isotype	IgG2b
Applications	WB, ICC/IF, IP
Reactivity	Human, Mouse, Rat

Package
100 µg

Applications

Application Note

*Optimal dilutions/concentrations should be determined by the researcher.

Suggested dilution	Recommended dilution
WB	1-3 µg/ml
ICC/IF	1-2 µg/ml
IP	Assay dependent

Not tested in other applications.

Calculated MW 72 kDa. ([Note](#))

Properties

Form	Liquid
Buffer	PBS, 0.1% BSA
Preservative	0.05% Sodium azide
Storage	Store as concentrated solution. Centrifuge briefly prior to opening vial. For short-term storage (1-2 weeks), store at 4°C. For long-term storage, aliquot and store at -20°C or below. Avoid multiple freeze-thaw cycles.
Concentration	1 mg/ml (Please refer to the vial label for the specific concentration.)
Immunogen	Recombinant PRC1 protein.
Purification	Protein G purified
Conjugation	Unconjugated

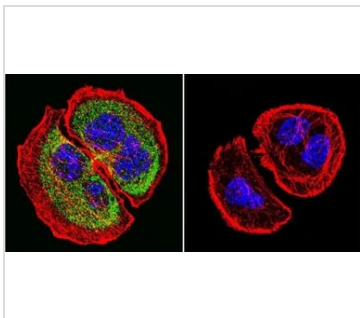
Note

For laboratory research use only. Not for any clinical, therapeutic, or diagnostic use in humans or animals. Not for animal or human consumption.

Purchasers shall not, and agree not to enable third parties to, analyze, copy, reverse engineer or otherwise attempt to determine the structure or sequence of the product.



For full product information, images and publications, please visit our [website](#).

DATA IMAGES

GTX15796 ICC/IF Image

ICC/IF analysis of U251 cells using GTX15796 PRC1 antibody [16F2]. Cells were probed without (right) or with(left) an antibody.

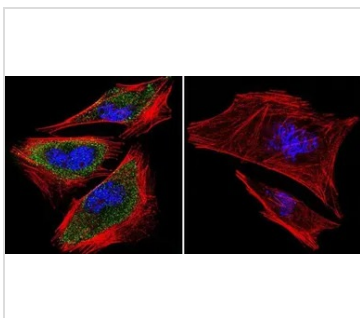
Green : Primary antibody

Blue : Nuclei

Red : Actin

Fixation : formaldehyde

Dilution : 1:20 overnight at 4°C


GTX15796 ICC/IF Image

ICC/IF analysis of A2058 Cells using GTX15796 PRC1 antibody [16F2]. Cells were probed without (right) or with(left) an antibody.

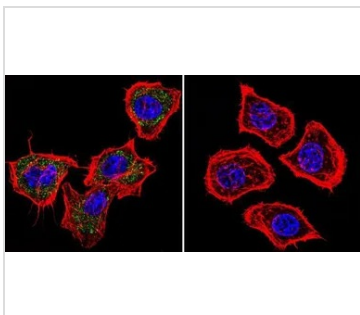
Green : Primary antibody

Blue : Nuclei

Red : Actin

Fixation : formaldehyde

Dilution : 1:100 overnight at 4 °C


GTX15796 ICC/IF Image

ICC/IF analysis of HeLa cells using GTX15796 PRC1 antibody [16F2]. Cells were probed without (right) or with(left) an antibody.

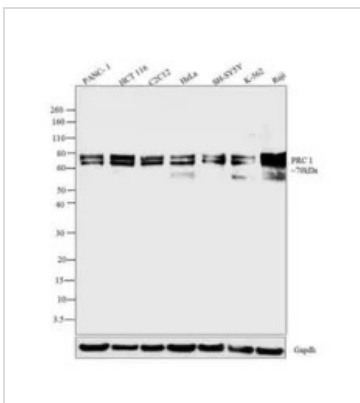
Green : Primary antibody

Blue : Nuclei

Red : Actin

Fixation : formaldehyde

Dilution : 1:100 overnight at 4 °C


GTX15796 WB Image

WB analysis of whole cell extracts (30 µg lysate) of PANC-1 (Lane 1), HCT 116 (Lane 2), C2C12 (Lane 3), HeLa (Lane 4), SH-SY5Y (Lane 5), K-562 (Lane 6) and Raji (Lane 7) using GTX15796 PRC1 antibody [16F2].

Dilution : 1-3 µg/ml



For full product information, images and publications, please visit our [website](https://www.genetex.com).