

IL2 antibody [S4B6]

Cat. No. GTX15803

Host	Rat
Clonality	Monoclonal
Isotype	IgG2a
Applications	WB, ELISA, IHC, Neutralizing/Inhibition
Reactivity	Mouse, Rat

Package
250 µg

Applications

Application Note

*Optimal dilutions/concentrations should be determined by the researcher.

Suggested dilution	Recommended dilution
WB	Assay dependent
ELISA	Assay dependent
IHC	Assay dependent
Neutralizing/Inhibition	Assay dependent

Not tested in other applications.

Calculated MW 19 kDa. ([Note](#))

Properties

Form	Liquid
Buffer	PBS
Preservative	No preservatives
Storage	Store as concentrated solution. Centrifuge briefly prior to opening vial. For short-term storage (1-2 weeks), store at 4°C. For long-term storage, aliquot and store at -20°C or below. Avoid multiple freeze-thaw cycles.
Concentration	0.95 mg/ml (Please refer to the vial label for the specific concentration.)
Immunogen	Recombinant mouse IL-2
Purification	Caprylic acid precipitation
Conjugation	Unconjugated

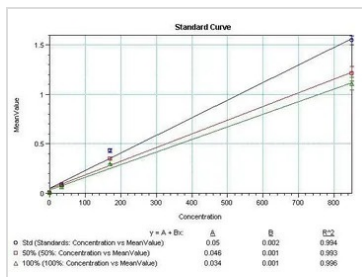
Note

For laboratory research use only. Not for any clinical, therapeutic, or diagnostic use in humans or animals. Not for animal or human consumption.

Purchasers shall not, and agree not to enable third parties to, analyze, copy, reverse engineer or otherwise attempt to determine the structure or sequence of the product.



For full product information, images and publications, please visit our [website](#).

DATA IMAGES

GTX15803 ELISA Image

Sandwich ELISA analysis of serial diluted recombinant mouse IL-2 protein using GTX15803 IL2 antibody [S4B6] (detection antibody) in quadruplicate at 0, 2.5 $\mu\text{g/ml}$, and 5 $\mu\text{g/ml}$ and Mouse IL-2 antibody at 5 $\mu\text{g/mL}$ (capture antibody).



For full product information, images and publications, please visit our [website](#).