

Lactoferrin antibody

Cat. No. GTX15811

Host	Rabbit
Clonality	Polyclonal
Isotype	IgG
Applications	WB, ICC/IF, IP, ELISA, IHC
Reactivity	Human

Package
100 µg

Applications

Application Note

*Optimal dilutions/concentrations should be determined by the researcher.

Suggested dilution	Recommended dilution
WB	1:500
ICC/IF	1:200
IP	1:200
ELISA	1:10000
IHC	1:200

Not tested in other applications.

Calculated MW 78 kDa. ([Note](#))

Product Note We do not recommend use of this product for Bovine samples.

Properties

Form	Liquid
Buffer	Tris/Glycine, 0.5% BSA, 30% Glycerol
Preservative	0.02% Sodium azide
Storage	Store as concentrated solution. Centrifuge briefly prior to opening vial. For short-term storage (1-2 weeks), store at 4°C. For long-term storage, aliquot and store at -20°C or below. Avoid multiple freeze-thaw cycles.
Concentration	0.8 mg/ml (Please refer to the vial label for the specific concentration.)
Immunogen	Full length native protein purified human Lactoferrin.
Purification	Purified by affinity chromatography
Conjugation	Unconjugated

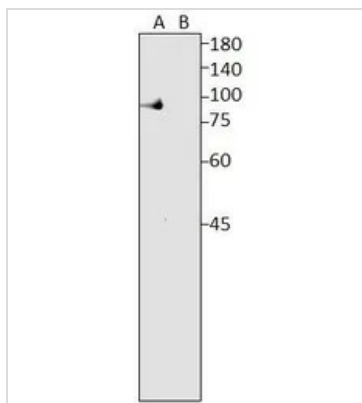


For full product information, images and publications, please visit our [website](#).

For laboratory research use only. Not for any clinical, therapeutic, or diagnostic use in humans or animals. Not for animal or human consumption.

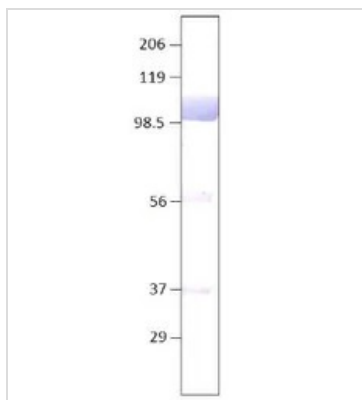
Note

Purchasers shall not, and agree not to enable third parties to, analyze, copy, reverse engineer or otherwise attempt to determine the structure or sequence of the product.

DATA IMAGES

GTX15811 WB Image

WB analysis of (A) purified human Lactoferrin and (B) purified bovine Lactoferrin using GTX15811 Lactoferrin antibody.

Dilution : 1:500


GTX15811 WB Image

WB analysis of human lactoferrin recombinant protein using GTX15811 Lactoferrin antibody.

Dilution : 1:500



For full product information, images and publications, please visit our [website](https://www.genetex.com).