

## TNF alpha antibody [XT3]

**Cat. No. GTX15821**

<b>Host</b>	Rat
<b>Clonality</b>	Monoclonal
<b>Isotype</b>	IgG1
<b>Applications</b>	WB, IHC-P, ELISA, IHC, Neutralizing /Inhibition, Sandwich ELISA
<b>Reactivity</b>	Human, Mouse

References ( 4 )

Package

250 µg

## Applications

**Application Note**

\*Optimal dilutions/concentrations should be determined by the researcher.

Suggested dilution	Recommended dilution
WB	Assay dependent
IHC-P	Assay dependent
ELISA	Assay dependent
IHC	Assay dependent
Neutralizing /Inhibition	Assay dependent
Sandwich ELISA	Assay dependent

**Note : Capture : GTX15821, Detection : GTX15823**

Not tested in other applications.

**Calculated MW** 26 kDa. ( [Note](#) )

## Properties

<b>Form</b>	Liquid
<b>Buffer</b>	PBS
<b>Preservative</b>	No preservatives
<b>Storage</b>	Store as concentrated solution. Centrifuge briefly prior to opening vial. For short-term storage (1-2 weeks), store at 4°C. For long-term storage, aliquot and store at -20°C or below. Avoid multiple freeze-thaw cycles.
<b>Concentration</b>	1 mg/ml (Please refer to the vial label for the specific concentration.)
<b>Immunogen</b>	Recombinant mouse TNF alpha
<b>Purification</b>	Ammonium sulfate precipitation
<b>Conjugation</b>	Unconjugated



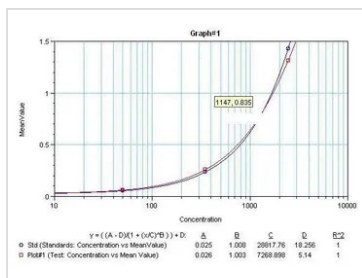
For full product information, images and publications, please visit our [website](#).

For laboratory research use only. Not for any clinical, therapeutic, or diagnostic use in humans or animals. Not for animal or human consumption.

**Note**

Purchasers shall not, and agree not to enable third parties to, analyze, copy, reverse engineer or otherwise attempt to determine the structure or sequence of the product.

DATA IMAGES



**GTX15821 ELISA Image**

Sandwich ELISA analysis of serial diluted mouse TNF-alpha recombinant protein using TNF alpha antibody]

Coating : GTX15821 TNF alpha antibody [XT3]

Detection : GTX15823 TNF alpha antibody [XT22] (Biotin)



For full product information, images and publications, please visit our [website](#).