

## TIF1 gamma antibody [16G9]

Cat. No. GTX15826

Host	Mouse
Clonality	Monoclonal
Isotype	IgG
Applications	WB, ICC/IF, IP
Reactivity	Human, Mouse, Rat

Package  
100 µg

## Applications

## Application Note

\*Optimal dilutions/concentrations should be determined by the researcher.

Suggested dilution	Recommended dilution
WB	2 µg/mL
ICC/IF	4 µg/ml
IP	Assay dependent

Not tested in other applications.

**Calculated MW** 123 kDa. ([Note](#))**Product Note** This antibody is specific for the gamma subunit of TIF1.

## Properties

Form	Liquid
Buffer	PBS, 0.1% BSA
Preservative	0.05% Sodium azide
Storage	Store as concentrated solution. Centrifuge briefly prior to opening vial. For short-term storage (1-2 weeks), store at 4°C. For long-term storage, aliquot and store at -20°C or below. Avoid multiple freeze-thaw cycles.
Concentration	1 mg/ml (Please refer to the vial label for the specific concentration.)
Immunogen	Recombinant protein: human TIF1 gamma.
Purification	Protein G purified
Conjugation	Unconjugated



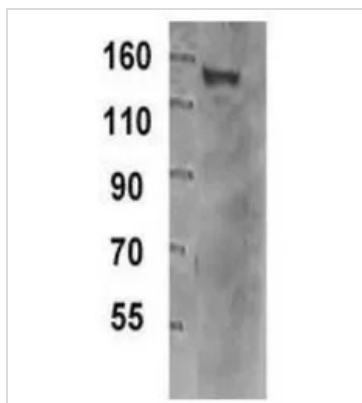
For full product information, images and publications, please visit our [website](#).

For laboratory research use only. Not for any clinical, therapeutic, or diagnostic use in humans or animals. Not for animal or human consumption.

## Note

Purchasers shall not, and agree not to enable third parties to, analyze, copy, reverse engineer or otherwise attempt to determine the structure or sequence of the product.

## DATA IMAGES



### GTX15826 WB Image

WB analysis of samples using GTX15826 TIF1 gamma antibody [16G9].



For full product information, images and publications, please visit our [website](#).