

Diablo antibody [SMAC 17 1-87]

Cat. No. GTX15827

Host	Mouse
Clonality	Monoclonal
Isotype	IgG1
Applications	WB, ICC/IF, IHC-P, IP
Reactivity	Human, Mouse, Rat

Package
100 µg

Applications

Application Note

*Optimal dilutions/concentrations should be determined by the researcher.

Suggested dilution	Recommended dilution
WB	Assay dependent
ICC/IF	1:20-1:200
IHC-P	1:20-1:200
IP	Assay dependent

Not tested in other applications.

Calculated MW 27 kDa. ([Note](#))

Properties

Form	Liquid
Buffer	PBS, 0.1% BSA
Preservative	0.05% Sodium azide
Storage	Store as concentrated solution. Centrifuge briefly prior to opening vial. For short-term storage (1-2 weeks), store at 4°C. For long-term storage, aliquot and store at -20°C or below. Avoid multiple freeze-thaw cycles.
Concentration	1 mg/ml (Please refer to the vial label for the specific concentration.)
Immunogen	C-Terminal His tagged recombinant human Smac/DIABLO.
Purification	Protein G purified
Conjugation	Unconjugated

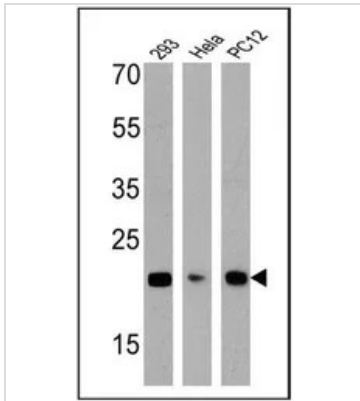
Note

For laboratory research use only. Not for any clinical, therapeutic, or diagnostic use in humans or animals. Not for animal or human consumption.

Purchasers shall not, and agree not to enable third parties to, analyze, copy, reverse engineer or otherwise attempt to determine the structure or sequence of the product.

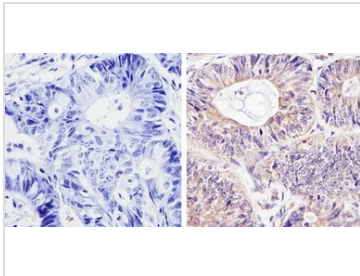


For full product information, images and publications, please visit our [website](#).

DATA IMAGES

GTX15827 WB Image

WB analysis of 25 ug of 293 (Lane 1), HeLa (Lane 2), and PC12 cell lysates (Lane 3) using GTX15827 Diablo antibody [SMAC 17 1-87].

Dilution : 1:1000


GTX15827 IHC-P Image

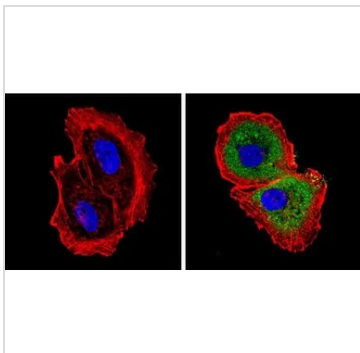
IHC-P analysis of human colon carcinoma tissue using GTX15827 Diablo antibody [SMAC 17 1-87].

Right : Primary antibody

Left : Negative control without primary antibody

Antigen retrieval : 10mM sodium citrate (pH 6.0), microwaved for 8-15 min

Dilution : 1:100


GTX15827 ICC/IF Image

ICC/IF analysis of MCF-7 cells using GTX15827 Diablo antibody [SMAC 17 1-87]. Cells were probed without (left) or with(right) an antibody.

Green : Primary antibody

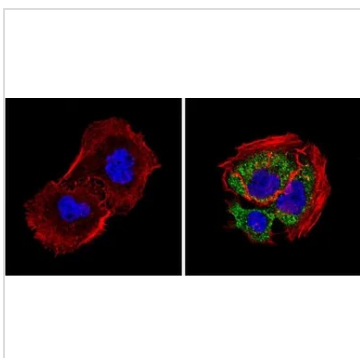
Blue : Nuclei

Red : Actin

Fixation : Formalin

Permeabilization : 0.1% Triton X-100 in TBS for 5-10 minute

Dilution : 1:100 incubated overnight at 4 °C


GTX15827 ICC/IF Image

ICC/IF analysis of A431 cells using GTX15827 Diablo antibody [SMAC 17 1-87]. Cells were probed without (left) or with(right) an antibody.

Green : Primary antibody

Blue : Nuclei

Red : Actin

Fixation : Formalin

Permeabilization : 0.1% Triton X-100 in TBS for 5-10 minute

Dilution : 1:100 incubated overnight at 4 °C



For full product information, images and publications, please visit our [website](http://www.genetex.com).