

CD26 antibody [236.3]

Cat. No. GTX15833

Host	Mouse
Clonality	Monoclonal
Isotype	IgG2b
Applications	ICC/IF, FCM, IP, IHC
Reactivity	Human, Rat

Package
250 µg

Applications

Application Note

*Optimal dilutions/concentrations should be determined by the researcher.

Suggested dilution	Recommended dilution
ICC/IF	1:20-1:200
FCM	Assay dependent
IP	Assay dependent
IHC	Assay dependent

Not tested in other applications.

Properties

Form	Liquid
Buffer	PBS
Preservative	No preservative
Storage	Store as concentrated solution. Centrifuge briefly prior to opening vial. For short-term storage (1-2 weeks), store at 4°C. For long-term storage, aliquot and store at -20°C or below. Avoid multiple freeze-thaw cycles.
Concentration	0.52 mg/ml (Please refer to the vial label for the specific concentration.)
Immunogen	Rat 110-120 kD single chain glycoprotein Depeptidyl Peptidase IV (CD26).
Purification	Protein G purified
Purity	This product is a Low Endotoxin formulation.
Conjugation	Unconjugated

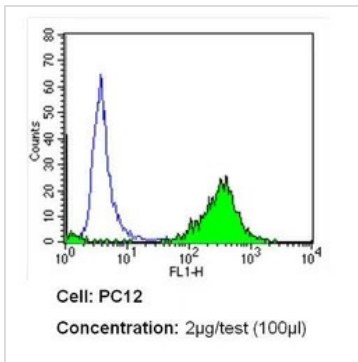
Note

For laboratory research use only. Not for any clinical, therapeutic, or diagnostic use in humans or animals. Not for animal or human consumption.

Purchasers shall not, and agree not to enable third parties to, analyze, copy, reverse engineer or otherwise attempt to determine the structure or sequence of the product.



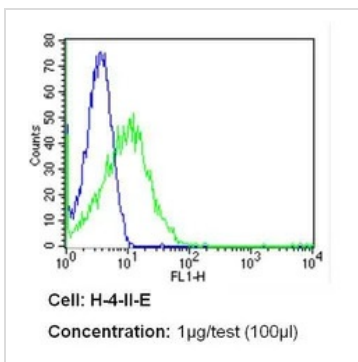
For full product information, images and publications, please visit our [website](#).

DATA IMAGES

GTX15833 FCM Image

FACS analysis of PC12 cells using GTX15833 CD26 antibody [236.3] compared to an isotype control (blue).

Dilution : 2 ug/test for 60 min at room temperature

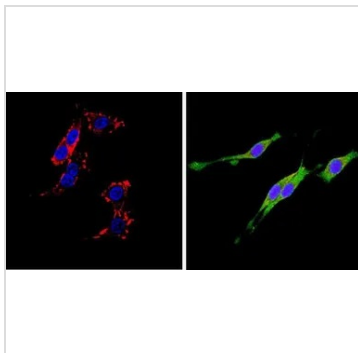
Fixation : 2% paraformaldehyde


GTX15833 FCM Image

FACS analysis of H-4-II-E cells using GTX15833 CD26 antibody [236.3] compared to an isotype control (blue).

Dilution : 1 ug/test for 60 min at room temperature

Fixation : 2% paraformaldehyde


GTX15833 ICC/IF Image

ICC/IF analysis of PC12 cells using GTX15833 CD26 antibody [236.3]. Cells were probed without (left) or with(right) an antibody.

Green : Primary antibody

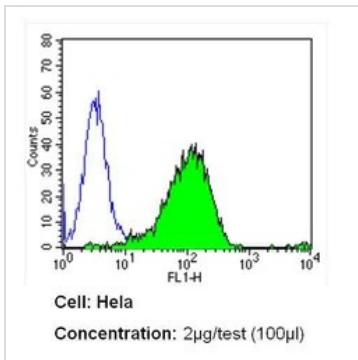
Blue : Nuclei

Red : Actin

Fixation : Formalin

Permeabilization : 0.1% Triton X-100 in TBS for 5-10 minute

Dilution : 1:20 overnight at 4°C


GTX15833 FCM Image

FACS analysis of HeLa cells using GTX15833 CD26 antibody [236.3] compared to an isotype control (blue).

Dilution : 2 ug/test for 60 min at room temperature

Fixation : 2% paraformaldehyde



For full product information, images and publications, please visit our [website](http://www.genetex.com).