

Cytochrome P450 3A5 antibody [F18 P3 B6]

Cat. No. GTX15837

Host	Mouse
Clonality	Monoclonal
Isotype	IgG1
Applications	WB, ICC/IF, IHC-P, ELISA, IHC
Reactivity	Human, Mouse, Rat, Bovine

Package
100 µl

Applications

Application Note

*Optimal dilutions/concentrations should be determined by the researcher.

Suggested dilution	Recommended dilution
WB	1:500
ICC/IF	1:250
IHC-P	1-5 µg/ml
ELISA	Assay dependent
IHC	Assay dependent

Not tested in other applications.

Calculated MW 57 kDa. ([Note](#))

Properties

Form	Liquid
Buffer	Ascites
Preservative	0.05% Sodium azide
Storage	Store as concentrated solution. Centrifuge briefly prior to opening vial. For short-term storage (1-2 weeks), store at 4°C. For long-term storage, aliquot and store at -20°C or below. Avoid multiple freeze-thaw cycles.
Immunogen	Synthetic peptide corresponding to residues E S R D G T L S G E, conjugated to ovalbumin.
Purification	Unpurified
Conjugation	Unconjugated

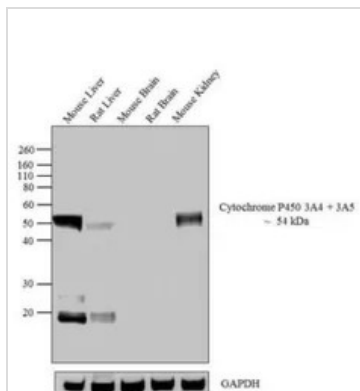
Note

For laboratory research use only. Not for any clinical, therapeutic, or diagnostic use in humans or animals. Not for animal or human consumption.

Purchasers shall not, and agree not to enable third parties to, analyze, copy, reverse engineer or otherwise attempt to determine the structure or sequence of the product.

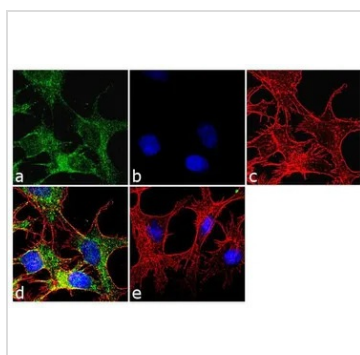


For full product information, images and publications, please visit our [website](#).

DATA IMAGES

GTX15837 WB Image

WB analysis of whole cell extracts (30 µg lysate) of Mouse Liver (Lane 1), Rat Liver (Lane 2), Mouse Brain (Lane 3), Rat Brain (Lane 4) and Mouse Kidney (Lane 5) using GTX15837 Cytochrome P450 3A5 antibody [F18 P3 B6].

Dilution : 1:100-1:1000


GTX15837 ICC/IF Image

ICC/IF analysis of HepG2 cells using GTX15837 Cytochrome P450 3A5 antibody [F18 P3 B6]. Panel e is a no primary antibody control.

Green : Primary antibody

Blue : Nuclei

Red : Actin

Fixation : 4% paraformaldehyde

Permeabilization : 0.1% Triton X-100 for 10 minute

Dilution : 1:250 dilution in 0.1% BSA and incubated for 3 hours at room temperature



For full product information, images and publications, please visit our [website](https://www.genetex.com).