

CD31 antibody [HEC7]

Cat. No. GTX15842

Host	Mouse
Clonality	Monoclonal
Isotype	IgG2a
Applications	WB, ICC/IF, FCM, IP, ELISA, IHC, Neutralizing/Inhibition
Reactivity	Human, Rat, Bovine

★★★★★ Review (1)

Package
100 µg

Applications

Application Note

*Optimal dilutions/concentrations should be determined by the researcher.

Suggested dilution	Recommended dilution
WB	Assay dependent
ICC/IF	1:50-1:500
FCM	3-5 µg/10 ⁶ cells
IP	Assay dependent
ELISA	Assay dependent
IHC	Assay dependent
Neutralizing/Inhibition	Assay dependent

Not tested in other applications.

Calculated MW 83 kDa. ([Note](#))

Properties

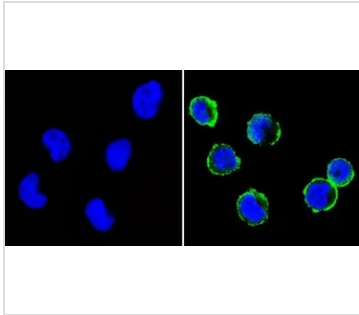
Form	Liquid
Buffer	PBS
Preservative	No preservative
Storage	Store as concentrated solution. Centrifuge briefly prior to opening vial. For short-term storage (1-2 weeks), store at 4°C. For long-term storage, aliquot and store at -20°C or below. Avoid multiple freeze-thaw cycles.
Concentration	1.06 mg/ml (Please refer to the vial label for the specific concentration.)
Immunogen	Human PECAM-1
Purification	Protein G purified
Conjugation	Unconjugated

For full product information, images and publications, please visit our [website](#).

For laboratory research use only. Not for any clinical, therapeutic, or diagnostic use in humans or animals. Not for animal or human consumption.

Note

Purchasers shall not, and agree not to enable third parties to, analyze, copy, reverse engineer or otherwise attempt to determine the structure or sequence of the product.

DATA IMAGES

GTX15842 ICC/IF Image

ICC/IF analysis of THP-1 cells using GTX15842 CD31 antibody [HEC7]. Cells were probed without (left) or with(right) an antibody.

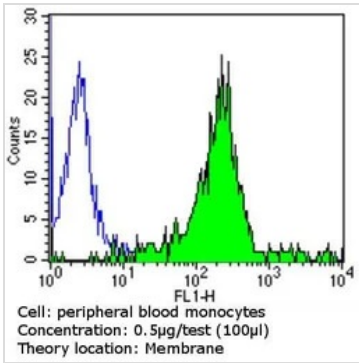
Green : Primary antibody

Blue : Nuclei

Fixation : Formalin

Permeabilization : 0.1% Triton X-100 in TBS for 5-10 minute

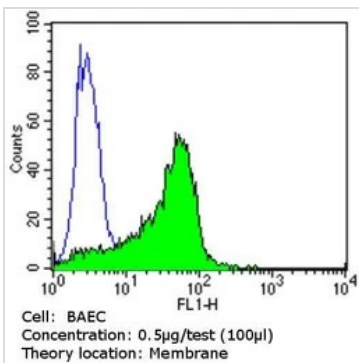
Dilution : 1:100 and incubated overnight at 4°C


GTX15842 FCM Image

FACS analysis of PBMC cells (green) using GTX15842 CD31 antibody [HEC7] compared to an isotype control (blue).

Dilution : 0.5 ug/test for 60 min at room temperature

Fixation : 2% paraformaldehyde


GTX15842 FCM Image

FACS analysis of BAEC cells using GTX15842 CD31 antibody [HEC7] compared to an isotype control (blue).

Dilution : 0.5 ug/test for 60 min at room temperature

Fixation : 2% paraformaldehyde



For full product information, images and publications, please visit our [website](https://www.genetex.com).