

RNF8 antibody, N-term

Cat. No. GTX15850

Host	Goat
Clonality	Polyclonal
Isotype	IgG
Applications	WB
Reactivity	Human

Package
100 µg

Applications

Application Note

*Optimal dilutions/concentrations should be determined by the researcher.

Suggested dilution	Recommended dilution
WB	0.1-1µg/ml
Not tested in other applications.	

Calculated MW 56 kDa. ([Note](#))**Product Note** This antibody is expected to recognize both reported isoforms (NP_003949.1 and NP_898901.1).

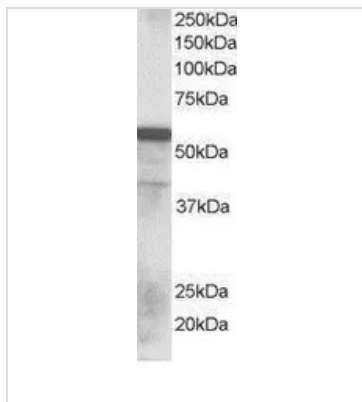
Properties

Form	Liquid
Buffer	TBS, 0.5% BSA
Preservative	0.02% Sodium azide
Storage	Store as concentrated solution. Centrifuge briefly prior to opening vial. For short-term storage (1-2 weeks), store at 4°C. For long-term storage, aliquot and store at -20°C or below. Avoid multiple freeze-thaw cycles.
Concentration	0.50 mg/ml (Please refer to the vial label for the specific concentration.)
Immunogen	Peptide with sequence GEPGFFVTGDRA-C, from the N Terminus of the protein sequence according to NP_003949.1; NP_898901.1.
Purification	Purified by ammonium sulphate precipitation followed by antigen affinity chromatography
Conjugation	Unconjugated
Note	For laboratory research use only. Not for any clinical, therapeutic, or diagnostic use in humans or animals. Not for animal or human consumption.
	Purchasers shall not, and agree not to enable third parties to, analyze, copy, reverse engineer or otherwise attempt to determine the structure or sequence of the product.



For full product information, images and publications, please visit our [website](#).

DATA IMAGES



GTx15850 WB Image

GTx15850 staining (0.1µg/ml) of Human Lung lysate (RIPA buffer, 35µg total protein per lane). Primary incubated for 1 hour. Detected by western blot using chemiluminescence.



For full product information, images and publications, please visit our [website](#).