

AP2 alpha antibody [3B5]

Cat. No. GTX15878

Host	Mouse
Clonality	Monoclonal
Isotype	IgG2b
Application	WB, ICC/IF, IHC-P, IP, IHC
Reactivity	Human, Mouse, Chicken

Package
100 µl

APPLICATION

Application Note

*Optimal dilutions/concentrations should be determined by the researcher.

Suggested dilution	Recommended dilution
WB	1:50 - 1:200
ICC/IF	1:50-1:500
IHC-P	1:50
IP	1:100 - 1:250
IHC	Assay dependent

Not tested in other applications.

Calculated MW 48 kDa. ([Note](#))

PROPERTIES

Form	Liquid
Buffer	PBS, 0.1% BSA
Preservative	0.05% Sodium azide
Storage	Store as concentrated solution. Centrifuge briefly prior to opening vial. For short-term storage (1-2 weeks), store at 4°C. For long-term storage, aliquot and store at -20°C or below. Avoid multiple freeze-thaw cycles.
Concentration	Batch dependent (Please refer to the vial label for the specific concentration.)
Immunogen	N-terminus of human AP2a.
Purification	Protein G purified
Conjugation	Unconjugated

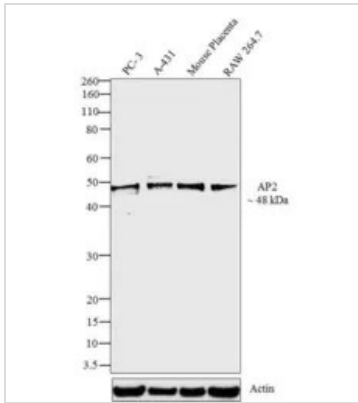


For full product information, images and publications, please visit our [website](#).

For laboratory research use only. Not for any clinical, therapeutic, or diagnostic use in humans or animals. Not for animal or human consumption.

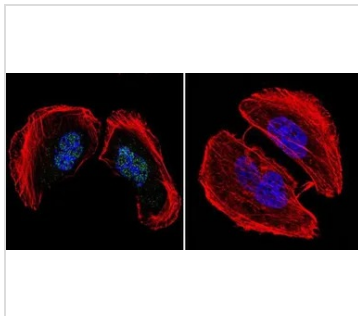
Note

Purchasers shall not, and agree not to enable third parties to, analyze, copy, reverse engineer or otherwise attempt to determine the structure or sequence of the product.

DATA IMAGES

GTX15878 WB Image

WB analysis of whole cell extracts (30 µg lysate) of PC-3 (Lane1), A-431 (Lane2), Mouse Placenta (Lane3) and RAW 264.7 (Lane5) using GTX15878 AP2 alpha antibody [3B5].

Dilution : 1:50-1:200


GTX15878 ICC/IF Image

ICC/IF analysis of U251 cells using GTX15878 AP2 alpha antibody [3B5]. Cells were probed without (right) or with(left) an antibody.

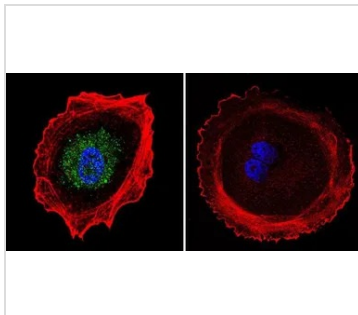
Green : Primary antibody

Blue : Nuclei

Red : Actin

Fixation : formaldehyde

Dilution : 1:100 overnight at 4 °C


GTX15878 ICC/IF Image

ICC/IF analysis of MCF-7 cells using GTX15878 AP2 alpha antibody [3B5]. Cells were probed without (right) or with(left) an antibody.

Green : Primary antibody

Blue : Nuclei

Red : Actin

Fixation : formaldehyde

Dilution : 1:20 overnight at 4°C



For full product information, images and publications, please visit our [website](https://www.genetex.com).