

# AMACR antibody

**Cat. No. GTX15893**

<b>Host</b>	Rabbit
<b>Clonality</b>	Polyclonal
<b>Isotype</b>	IgG
<b>Application</b>	WB, ICC/IF, IHC-P, IP, ELISA
<b>Reactivity</b>	Human, Rat

**Package**  
100 µg

## APPLICATION

### Application Note

\*Optimal dilutions/concentrations should be determined by the researcher.

Suggested dilution	Recommended dilution
WB	1:500
ICC/IF	1:100
IHC-P	Assay dependent
IP	1:200
ELISA	1:10000

Not tested in other applications.

**Calculated MW** 42 kDa. ( [Note](#) )

## PROPERTIES

<b>Form</b>	Liquid
<b>Buffer</b>	Tris/Glycine, 0.5% BSA, 30% Glycerol
<b>Preservative</b>	0.02% Sodium azide
<b>Storage</b>	Store as concentrated solution. Centrifuge briefly prior to opening vial. For short-term storage (1-2 weeks), store at 4°C. For long-term storage, aliquot and store at -20°C or below. Avoid multiple freeze-thaw cycles.
<b>Concentration</b>	0.6 mg/ml (Please refer to the vial label for the specific concentration.)
<b>Immunogen</b>	Synthetic peptide taken within amino acid region 50-100 on human alpha-methylacyl-CoA racemase protein.
<b>Purification</b>	Purified by affinity chromatography
<b>Conjugation</b>	Unconjugated

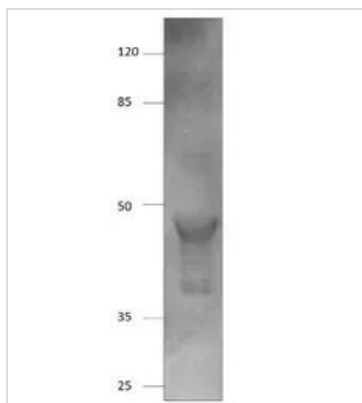


For full product information, images and publications, please visit our [website](#).

For laboratory research use only. Not for any clinical, therapeutic, or diagnostic use in humans or animals. Not for animal or human consumption.

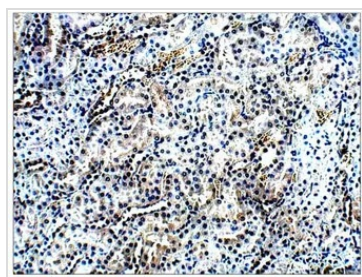
**Note**

Purchasers shall not, and agree not to enable third parties to, analyze, copy, reverse engineer or otherwise attempt to determine the structure or sequence of the product.

**DATA IMAGES**

**GTX15893 WB Image**

WB analysis of AMACR recombinant protein using GTX15893 AMACR antibody.

Dilution : 1:250


**GTX15893 IHC-P Image**

IHC-P analysis of rat kidney tissue using GTX15893 AMACR antibody.

Dilution : 1:100



For full product information, images and publications, please visit our [website](#).